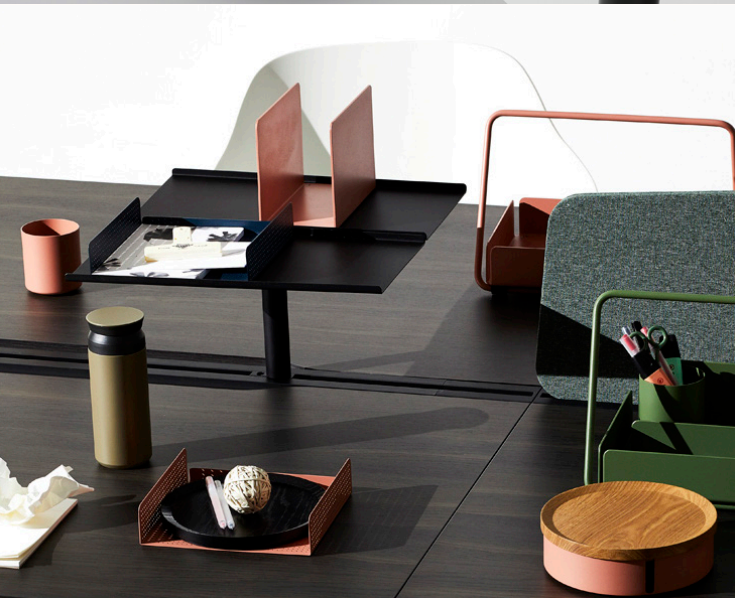


# WORK SHAPES Shelves



## Features:

Work Shapes is a family of worktop and hanging utility accessories.

It is paired with the shelving system to stack, compose, store, arrange, share, play and shape the way you work.

## Options:

- Mounting Options: Through Desk, Clamp-On, Single workstations/runs with CTRL rail and Pod with CTRL rail

**Design:** ZENITH DESIGN STUDIO

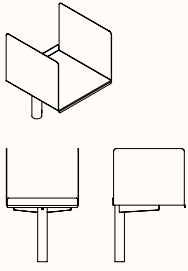
**Warranty:** 10 years

## Finishes:

### Powder Coat (Fine Texture):

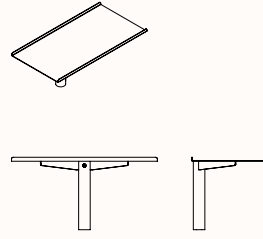


## Dimensions



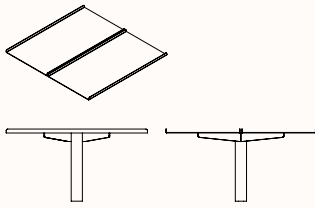
### Binder Shelf

OW 250mm  
OD 250mm  
OH 400mm



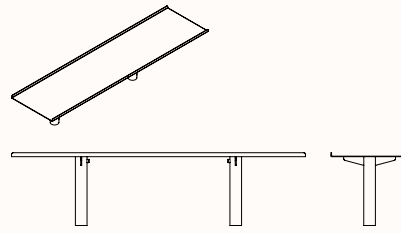
### Shelf

OW 425mm  
OD 220mm  
OH 200mm



### Shelf Double

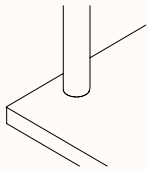
OW 425mm  
OD 450mm  
OH 200mm



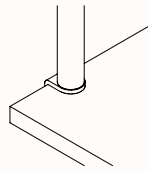
### Shelf Long

OW 800mm  
OD 220mm  
OH 200mm

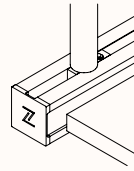
## Shelf Mounting Options



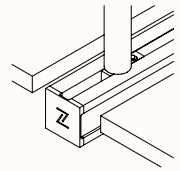
Through Desk



Clamp-On



Workstation with CTRL rail



Pod with CTRL rail

## Suitability Matrix

	Binder Shelf	Shelf	Shelf Double	Shelf Long
Through desk mount	•	•	-	-
Clamp-On (clamp fixture required)	•	•	-	-
Single workstations/runs with CTRL rail	•	•	-	-
Pod with CTRL rail	•	•	•	•

• Suitable – Not Suitable