

# Verse Screen Fabric Specification

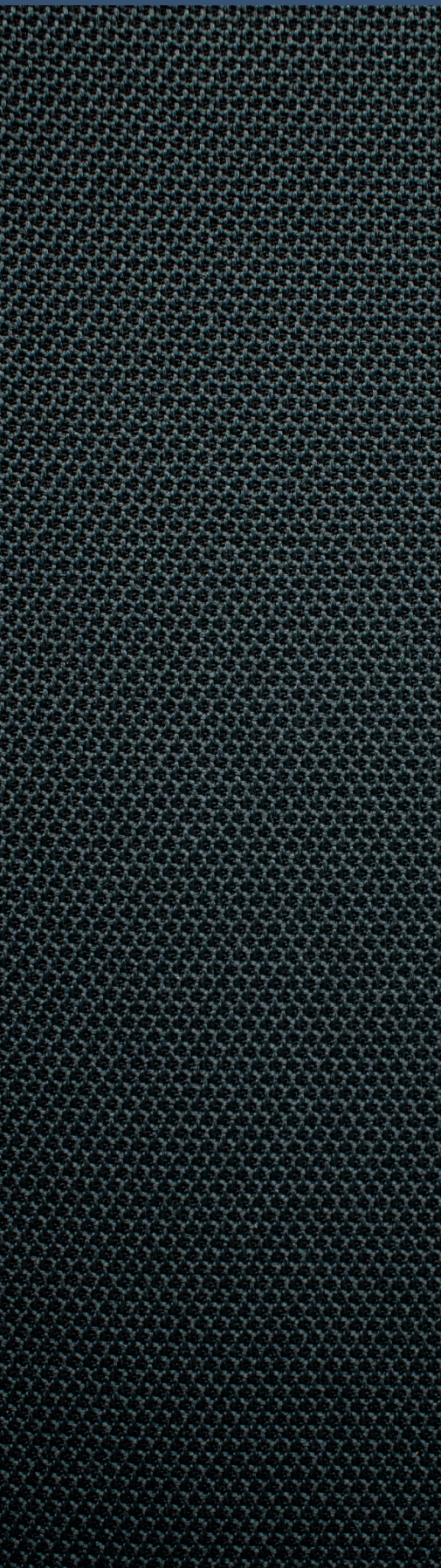


## CONTENTS:

Category A	<a href="#">2</a>
Category B	<a href="#">3</a>
Category C	<a href="#">5</a>
Category E	<a href="#">10</a>

# Screen / Panel

# Category A



## Zenith Woven

**Composition:** 100% polyester

**Width:** 170cm

**Weight:** 560g

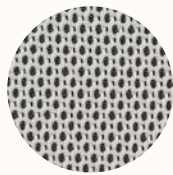
**Use:** Screen

**Abrasion:** 60,000 Martindale Rubs

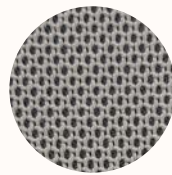
**Light Fastness:** ISO 105 B02 Grade 5-6

**Fire Test:** BS5852 Section 4/part 1  
TB117 Section 1  
ASI530 Part 3

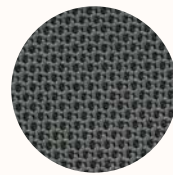
**Fabric Care:** Do not wash, do not bleach, do not tumble dry, iron at medium temperature (max 130°C), professional dry cleaning.



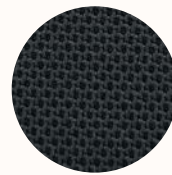
01 Cloud



02 Storm



03 Coal



04 Ink



05 Clay

# Screen / Panel

# Category B



## Camira Bond (AU/NZ only)

Heavy duty commercial upholstery and screen fabric. Linen look textural fabric with 12 great useable neutrals and sharp brights. Bond is ideal as a Screen or Upholstery fabric.

**Application:** Upholstery / Screen

**Composition:** 100% Polyester

**Width:** 170cm

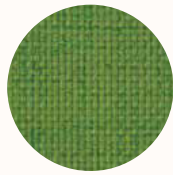
**Weight:** 211g/m<sup>2</sup>

**Abrasion Resistance:** 70,000+ Martindale

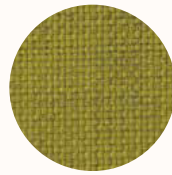
**Flammability:** AS1530 Part 3

**Qualities:** Soil Repellency treatment

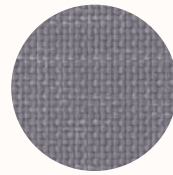
**Cleaning:** Do not remove any part for separate cleaning. Protect from direct sunlight. Vacuum regularly using low suction. Rotate reversible cushions regularly. Professional cleaning recommended.



Leaf



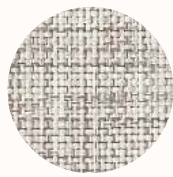
Lemoncello



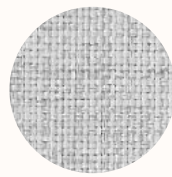
Shark



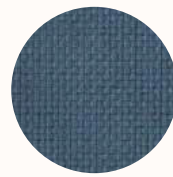
Snow



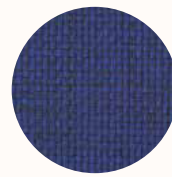
Linen



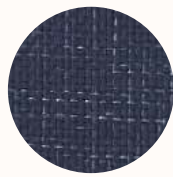
Smoke



Spring



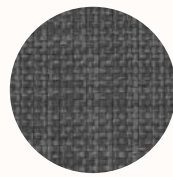
Royal



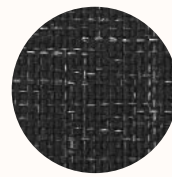
Navy



Garnet



Grey Haze



Jet

# Screen / Panel

# Category B



## Camira Artisan

Heavy duty commercial screen fabric. Linen look textural fabric with 10 great useable neutrals and sharp brights.

**Application:** Commercial Screen Fabric (no upholstery)

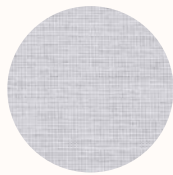
**Composition:** 100% Polyester

**Width:** 170cm

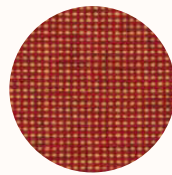
**Abrasion Resistance:** 65,000+ Martindale

**Flammability:** AS1530.3, ISO5660

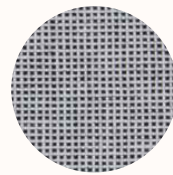
**Cleaning:** Do not remove any part for separate cleaning. Protect from direct sunlight. Vacuum regularly using low suction. Rotate reversible cushions regularly. Professional cleaning recommended.



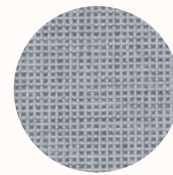
Envisage



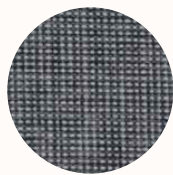
Compose



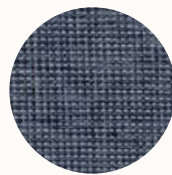
Perceive



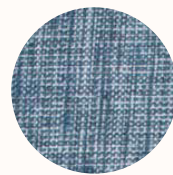
Invent



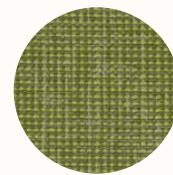
Embark



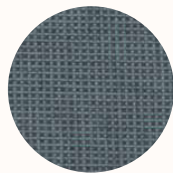
Generate



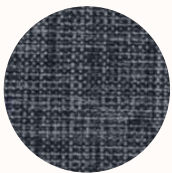
Discover



Create



Imagine



Construct

## Screen / Panel

## Category C



## Camira Carlow

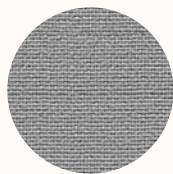
Carlow echoes the calm, gentle landscape of its Celtic namesake in rural Ireland. The fabric, like the county, invites you to escape into a place of tranquillity, discovering and exploring its hidden gems scattered throughout a vibrant textile tableau. This dobby weave panel fabric is brought to life in brave and intriguing colour mixes which can be teamed with our most popular upholstery fabrics as well as its panel partner Cara. Carlow is acoustically transparent, making it ideal as a decorative facing for sound absorbing boards.

**Composition:** 100% polyester

**Width:** Approx 170cm

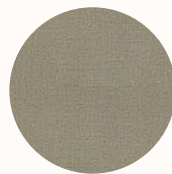
**Weight:** 348 g/m

**Durability:** 65,000 Martindale



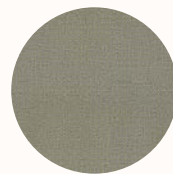
CLW01

Tallow



CLW02

Ballina



CLW03

Roundwood



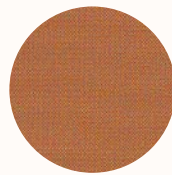
CLW04

Quin



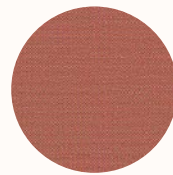
CLW05

Callan



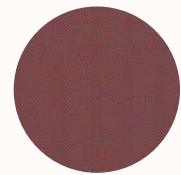
CLW06

Navan



CLW07

Dublin



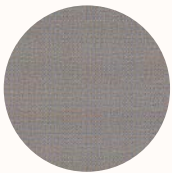
CLW08

Redcross



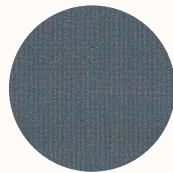
CLW09

Convoy



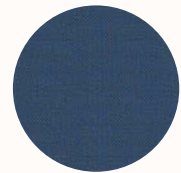
CLW10

Ardee



CLW11

Wicklow



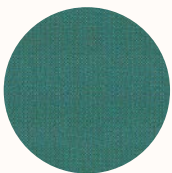
CLW12

Malin



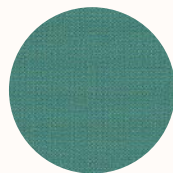
CLW13

Sligo



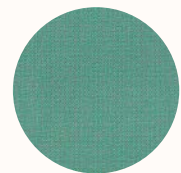
CLW14

Bree



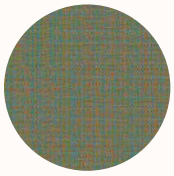
CLW15

Cavan

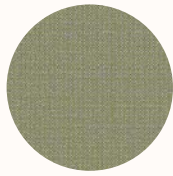


CLW16

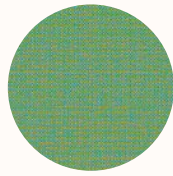
Mayo



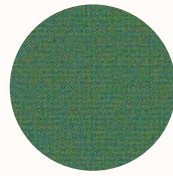
CLW17  
Balloo



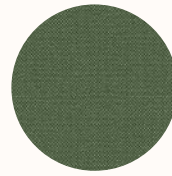
CLW18  
Carrick



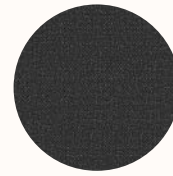
CLW19  
Ardmore



CLW20  
Ennis



CLW21  
Emily



CLW22  
Avoca



CLW23  
Parteen



CLW24  
Glenamoy



CLW25  
Clifden

## Screen / Panel

## Category C

## Camira Cara

Cara is a plain weave panel fabric available in a wide selection of commercial colourways. One of our most popular vertical surface fabrics, Cara is used extensively on desk screens, wallsides and on pin boards.

This fabric is largely acoustically transparent and as such is ideal to be used as a decorative facing for sound absorbing boards.

**Composition:** 100% polypropylene

**Width:** Approx 170cm

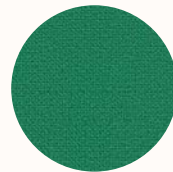
**Weight:** 220 g/m<sup>2</sup>



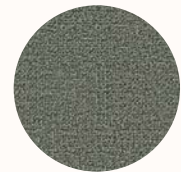
EJ004  
Glass



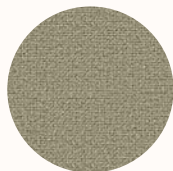
EJ011  
Walten



EJ015  
Carron



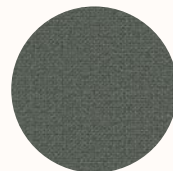
EJ016



EJ033  
Spray



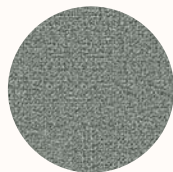
EJ038  
Tummel



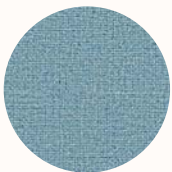
EJ048  
Merrick



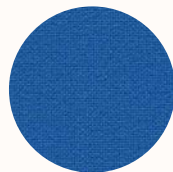
EJ076  
Pitlochry



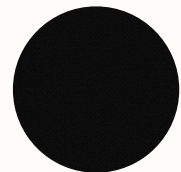
EJ104  
Lead



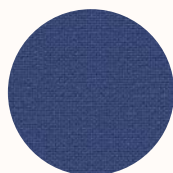
EJ105  
Dolphin



EJ125  
Galilee



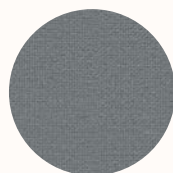
EJ138  
Black



EJ154  
Adriatic



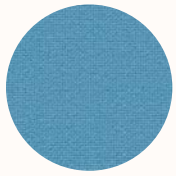
EJ169  
Clan



EJ172  
Chaucer



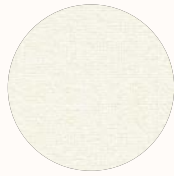
EJ173  
Austen



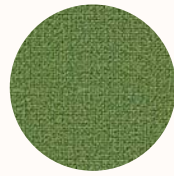
EJ175  
Inverness



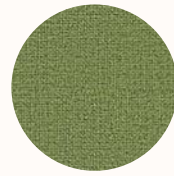
EJ180  
Cluanie



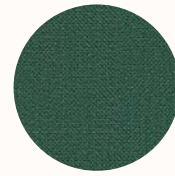
EJ184  
Vit



EJ185  
Staffa



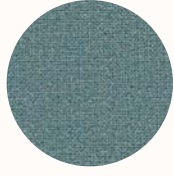
EJ186  
Fair Isle



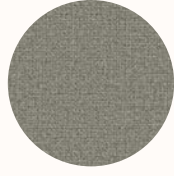
EJ187  
Lora



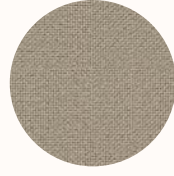
EJ188  
Easdale



EJ189  
Ronay



EJ190  
Hillswick



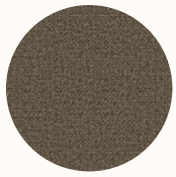
EJ191  
Shetland



EJ192  
Lomond



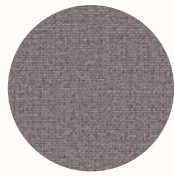
EJ193  
Beltane



EJ194  
Lerwick



EJ195  
Maree



EJ196  
Denny



EJ197  
Lossie



## Screen / Panel

## Category C

## Kvadrat Relate Screen

Relate Screen is a special version of the sophisticated twill-woven upholstery textile Relate developed for wall panels, desk screens and similar applications. Patricia Urquiola has created both designs to rethink the concept of melange. While Relate Screen is identical in composition to Relate, it has a more open structure. A faux-uni, it initially appears monochromatic yet, under closer inspection, reveals a diagonal weave which fluidly blends two different coloured yarns. Relate Screen's twill-woven construction captures a delicate sense of movement and subtly references the fashion world. The textile also features a soft hand and an expression that resembles natural fibres.

**Composition:** 100% Trevira CS

**Width:** Approx 170cm

**Weight:** 470 g/lin.

**Pilling:** 3-4 (ISO 1-5)

**Light Fastness:** 5-7 (ISO 1-8)



0128



0158



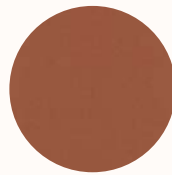
0168



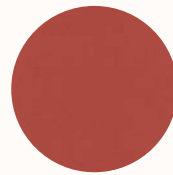
0178



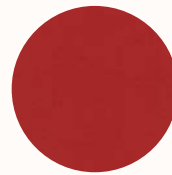
0388



0468



0568



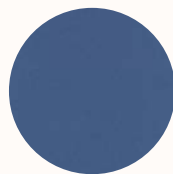
0648



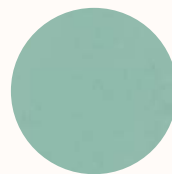
0698



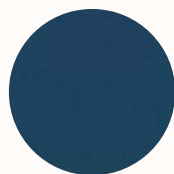
0718



0778



0828



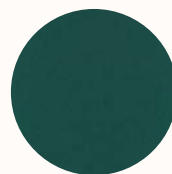
0888



0948



0968



0988

# Screen / Panel

# Category E



## Camira Era

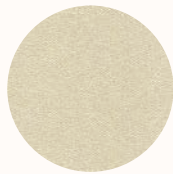
Era is a subtle, two tone polyester fabric containing stretch in both directions for use on panels, pods and soft seating. The baby herringbone weave offers an understated contemporary texture while its colouring technique provides close up intrigue. The palette incorporates playful brights and sophisticated muted tones.

**Composition:** 100% Polyester

**Width:** Approx 170cm

**Weight:** 320 g/m2 ±5%

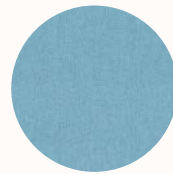
**Light Fastness:** 5 (ISO 105 - B02)



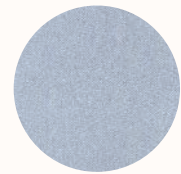
CSX30  
Transition



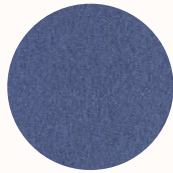
CSX01  
Futurist



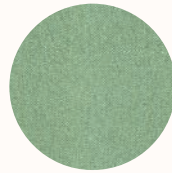
CSX20  
Aeon



CSX38  
Allowance



CSX42  
Range



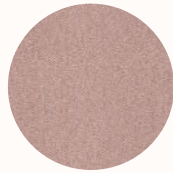
CSX36  
Notation



CSX33  
Analogue



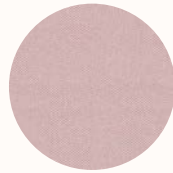
CSX11  
Forecast



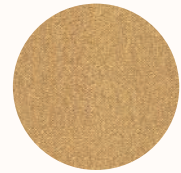
CSX23  
Occurrence



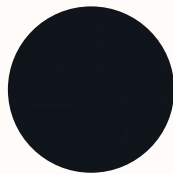
CSX41  
Quota



CSX19  
Calendar



CSX31  
Splitsecond



CSX14  
Forward

## Screen / Panel

## Category E

## Camira Sonus

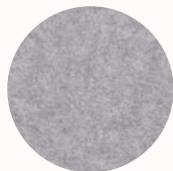
With a fibre felted finish and an appealing mélange effect, the Sonus range is the ideal accompaniment for a modern interior. An acoustically transparent fabric for use on panels, Sonus is the perfect enhancement for a range of vertical surfaces.

**Composition:** FHR: 72% Polyester, 18% Polyamide, 10% Viscose  
FHU: 57% Polyester, 43% Polyamide

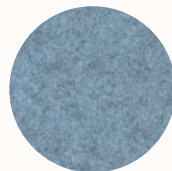
**Width:** Approx 170cm

**Weight:** 200 g/m<sup>2</sup> ±10%

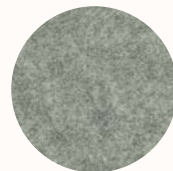
**Light Fastness:** Standard: 5 (ISO 105 - B02), FHR05: 4 (ISO 105 - B02)



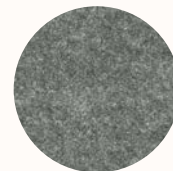
FHR02  
Voice



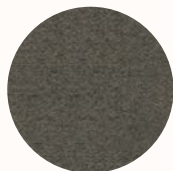
FHR06  
Audio



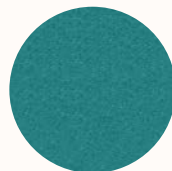
FHR03  
Beat



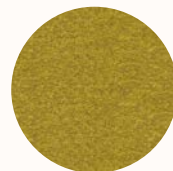
FHU04  
Music



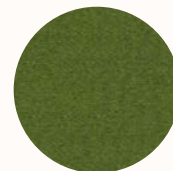
FHR07  
Melody



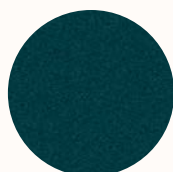
FHU11  
Rap



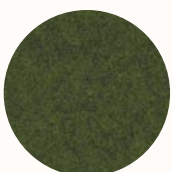
FHR01  
Song



FHR12  
Acoustic



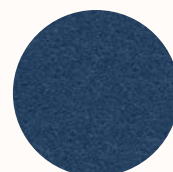
FHU15  
Lyric



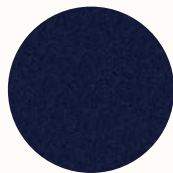
FHU08  
Vocal



FHR13  
Soul



FHU14  
Classical



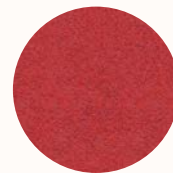
FHR16  
Verse



FHR05  
Amp



FHR09  
Pop



FHR17  
Chorus



FHU10  
Chime

## Screen / Panel

## Category E

## Kvadrat Remix Screen

Remix Screen is a lighter version of the acclaimed textile Remix, which is specially developed for wall panels, deskscreens and similar applications. Like Remix, it is designed by Giulio Ridolfo. Remix Screen comes in 16 elegant colourways created matching the palette of Remix 3. Inspired by an extensive study of traditional Indigo dyeing undertaken by Giulio Ridolfo on his travels, these comprise subtle neutrals and natural notes, as well as bolder blue and orange hues. Suitable for contract use, Remix Screen is very durable and has a long life span. It is ideal for architects and designers who seek to configure interiors into different spaces with panels, screens and room-dividing furniture.

**Composition:** 90% new wool worsted 10% nylon

**Width:** Approx 170cm

**Weight:** 450 g/lin. m

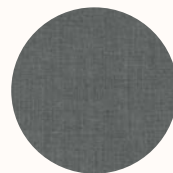
**Light Fastness:** 6-7



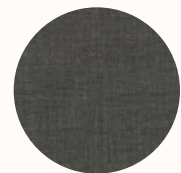
0128



0138



0148



0158



0188



0228



0288



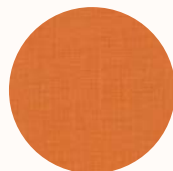
0328



0358



0408



0528



0608



0688



0818



0908



0998