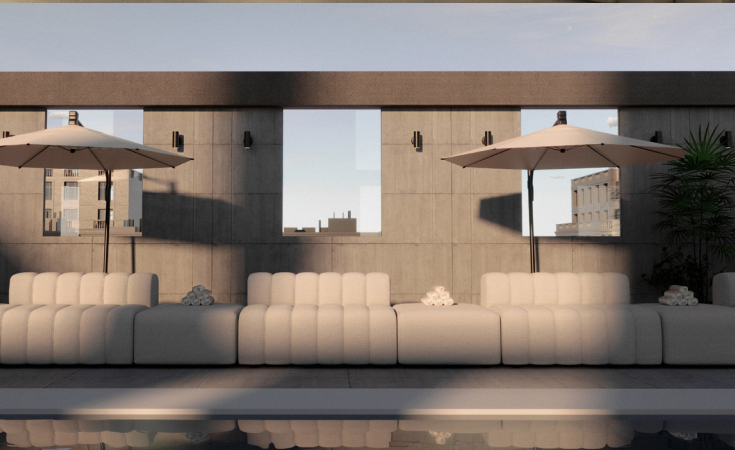


STUDIO Outdoor Modular sofa



Features:

Studio Outdoor is inspired by late 70s sofa styles, refined in a contemporary way - giving the series a unique identity. Each module of Studio articulates soft and welcoming lines ideally suited for living, socialising and relaxing where one can feel totally at ease. The armrest cushion is loose and can be moved and repositioned across the series.

Options:

- Movable armrest cushion
- Pillow cushions

Design: KRISTIAN SOFUS HANSEN & TOMMY HYLDAHL for NORR11

Warranty: 5 years

Finishes:

Structure: Marine plywood & medium firm quickdry foam
Water-proof upholstery: Sunbrella Savane

Sunbrella Savane Upholstery:

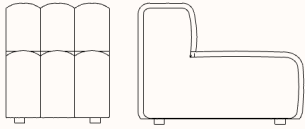


Whisper
J349



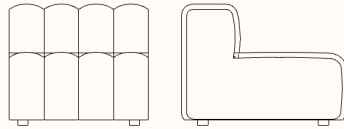
Coconut
J233

Dimensions



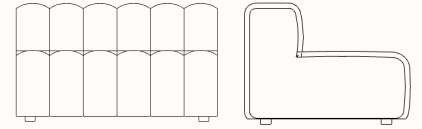
Studio Small

OW 600mm
OD 960mm
SH 470mm
SD 610mm
OH 700mm



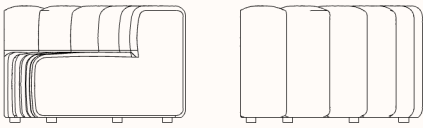
Studio Medium

OW 800mm
OD 960mm
SH 470mm
OH 700mm



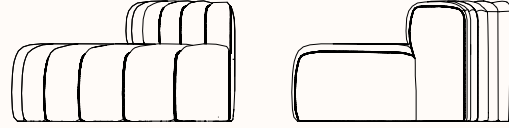
Studio Large

OW 1200mm
OD 960mm
SH 470mm
OH 700mm



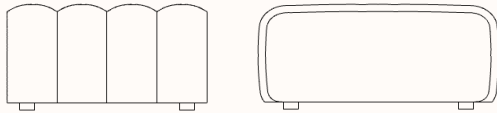
Studio Corner

OW 1100mm
OD 960mm
SH 470mm
OH 700mm



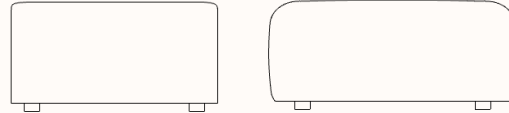
Studio Curve

OW 1250mm
OD 960mm
SH 470mm
OH 700mm



Ottoman

OW 800mm
OD 960mm
OH 470mm



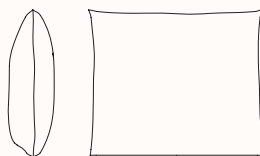
Ottoman Classic

OW 800mm
OD 900mm
OH 470mm



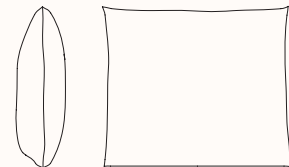
Armrest

OW 200mm
OD 500mm
OH 160mm



Studio Pillow 40X40

OW 400mm
OH 400mm



Studio Pillow 50X50

OW 500mm
OH 500mm