

Enhance you



Denn

by **Zenith**





Meet Denn, a high performance task & multipurpose chair that redefines style & comfort in modern workspaces.

Denn is an intelligent chair for the modern workspace.

A chair for tasks, meetings and collaborations, Denn effortlessly adapts to your ever-changing movement, postures and positions throughout your day. Developed in collaboration with Formway, Denn has a calm, inspiring, residential aesthetic. With unsurpassed functional and environmental performance, Denn enhances you and your every move.





Be inspired by your workspace.

Denn enhances modern workspaces by creating an environment where people can thrive. The chair's functionality and beauty encourages collaboration, innovative thinking and an overall sense of calm.



Perfect support and unimpeded movement through every seated position.

Seamless Motion

The patent-pending seat mechanism means there's no need to make manual adjustments. Denn delivers a seamless motion allowing the seat and back to support the continuous movement from one posture to the next. Denn moves eight degrees forward giving constant under thigh support.



Unique 4D arms with 45 degree inwards rotation.

Patent Pending 4D Arms

Denn's 4D arms enable people to feel comfortable when interacting. The arms effortlessly rotate 45 degrees inwards to provide a place to rest your arms and hands, making people feel secure and allowing for unhindered collaboration and interaction.





Thousands of hours. Thousands of reasons to love Denn.

We continually study people in many different workplaces to understand how bodies move and interact. Our amassed knowledge has enabled us to create a chair that fulfils the unmet needs of the modern workplace.



Great design is a collaboration

Zenith and Formway have created a chair that changes the way you and your team work individually and together. Denn is a response to our intimate understanding of how the modern workspace creates hybrid environments, where people are continually switching between task

working, collaborative meetings, and casual touch-downs through the day.

Our design and research teams have observed, listened, investigated, experimented and amassed layers of knowledge to give you a chair that supports you, your values, and your culture.

Designed by Formway

Denn has been designed by Formway, a research-led design studio that collaborates with the world's most respected furniture and performance seating brands. Inspired by Formway's subconscious sitting philosophy,

Denn is an unsurpassed example of functional, environmental, and aesthetic innovation that enhances your work-life while respecting the planet.





Materials

Back Structure

90% post-consumer recycled polycarbonate, no glass fibre.

3D Knit

SEAQUAL® YARN 100% post-consumer recycled polyester. Containing Upcycled Marine Plastic & post-consumer PET from land sources.

Seat Textile

100% Recycled polyester / Nylon yarn by Camira.

Arms

100% Recycled post-consumer Nylon, glass content, 50% post-industrial steel.

Mechanism

100% Recycled post-consumer Nylon, glass content, 50% post-industrial steel.

Seat Structure

100% Recycled post-consumer polypropylene, mineral filler.

Base

100% Recycled post-consumer Nylon, glass content



Blue Tick
Product
Certification



Doing the best for our planet.

Utilising up to 58% total weight in post-consumer and post-industrial recycled content, Denn embraces a post-plastic era by transforming upcycled low-grade waste materials into innovative performance seating.



One of its most distinctive features is the innovative and ergonomic digitally knitted back surface. Made by Camira using SEAQUAL® YARN, this is a 100% post-consumer recycled polyester fabric which contains upcycled marine plastic litter. Zero waste by nature, custom made by creation, and effortless application by design, Camira Knit is a state-of-the-art manufacturing capability with human considerations at its core.

SEAQUAL INITIATIVE

SEAQUAL INITIATIVE is a unique collaborative community that works with ocean clean-up programs around the world to transform the marine litter they recover into Upcycled Marine Plastic; a new, fully traceable raw material with the power to raise awareness of the issue of marine pollution and highlight those helping to fight it. In choosing products containing Upcycled Marine Plastic, you are helping to clean our oceans.

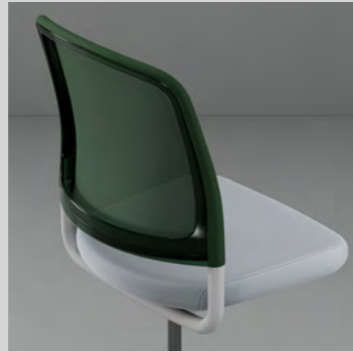


Light Finishes

3D Knit with Polycarbonate Back Frame



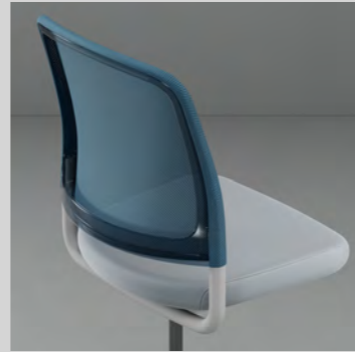
Amber



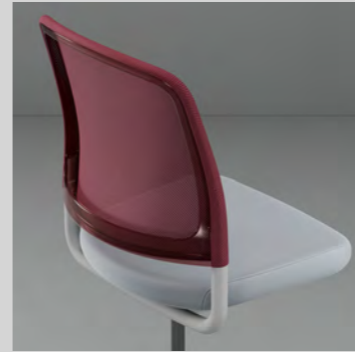
Forest



Moss



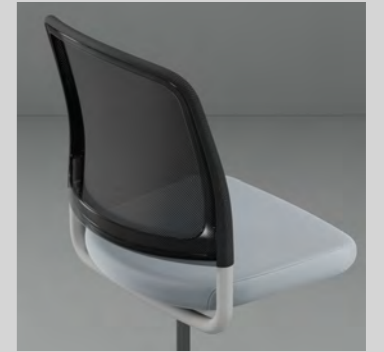
Ocean



Ruby



Pebble



Slate

Arms



No Arm

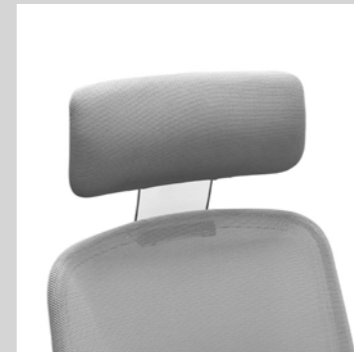


4D Arm

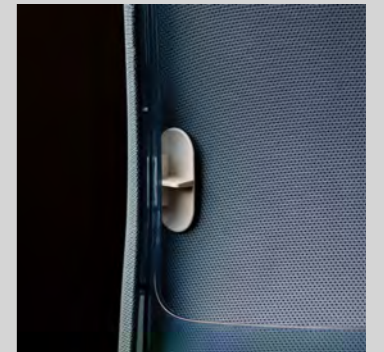


Loop Arm

Options



Headrest



Adjustable Lumbar



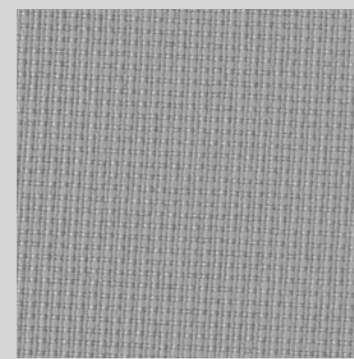
Standard Base
Light Castor



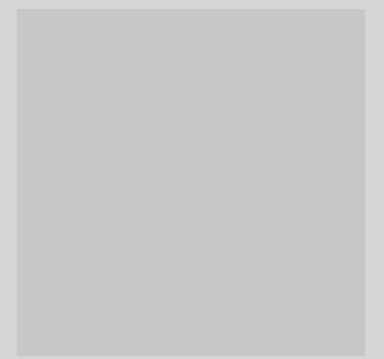
Polished Base
Light Castor



Drafting Base
Black Footring & Light Castor



Seat Upholstery
Camira Quest Fossil



Light Frame & Base

Dark Finishes

3D Knit with Polycarbonate Back Frame



Amber



Forest



Moss



Ocean



Ruby



Pebble



Slate

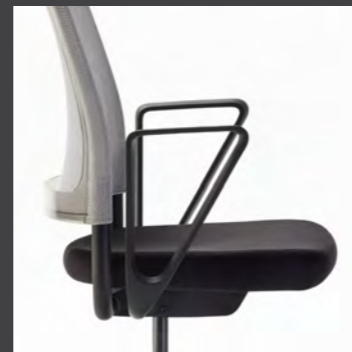
Arms



No Arm

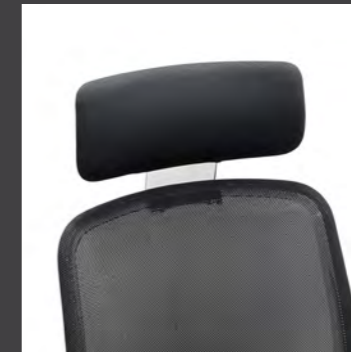


4D Arm

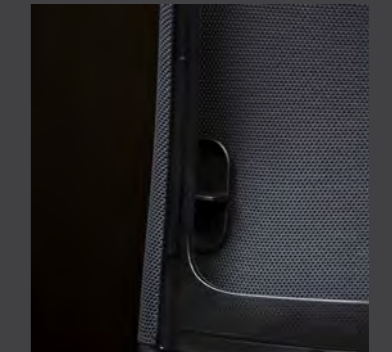


Loop Arm

Options



Headrest



Adjustable Lumbar

Bases



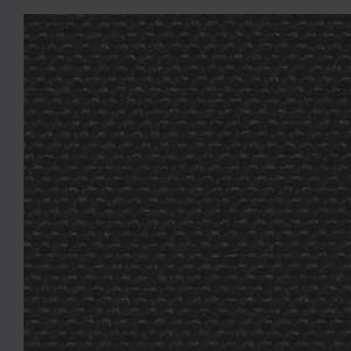
Standard Base
Dark Castor



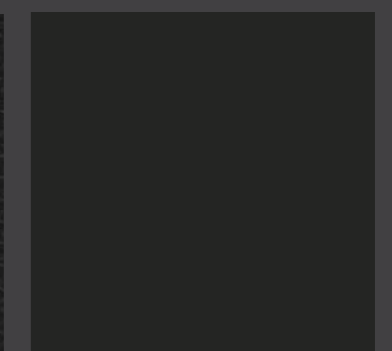
Polished Base
Dark Castor



Drafting Base
Black Footring & Dark Castor



Seat Upholstery
Camira Quest Depth



Dark Frame & Base

Dimensions

Chair



Seat	mm	Inch
Width:	503	19.80
Depth:	374 - 430	14.72 - 16.93
Height:	386 - 520	15.20 - 20.47

Backrest	mm	Inch
Width:	520	20.47
Height:	524	20.63

Headrest	mm	Inch
Width:	395	15.55
Height:	*80	*3.15

*Adjustment range

4D Arm	mm	Inch
Width between arms:	496	19.53
Height above seat:	200 - 300	7.87 - 11.81

Loop Arm	mm	Inch
Width between arms:	496	19.53
Height above seat:	200	7.87

Drafting



Seat	mm	Inch
Width:	503	19.80
Depth:	374 - 430	14.72 - 16.93
Height:	386 - 520	15.20 - 20.47

Backrest	mm	Inch
Width:	520	20.47
Height:	524	20.63

Drafting Base	mm	Inch
Width:	503	9.80
Depth:	347 - 430	13.66 - 16.93
Height:	559 - 755	22.00 - 29.69

Headrest	mm	Inch
Width:	395	15.55
Height:	*80	*3.15

*Adjustment range

4D Arm	mm	Inch
Width between arms:	496	19.53
Height above seat:	200 - 300	7.87 - 11.81

Loop Arm	mm	Inch
Width between arms:	496	9.53
Height above seat:	200	7.87

Zenith | curators of the modern workspace

We've worked with interior designers, architects and workplace curators for many years. Together, we've developed a range of internal workspace environments. We work alongside these curators of modern workspaces to redefine the environments where people live, work, socialise, interact and learn.

Contemporary workplaces have to combine leading edge technology and physical elements in a way that produces productive environments for organisations. And every organisation is unique. So before we recommend a solution, we work hard to understand the organisation and the people who define its culture.

Australia | New Zealand | Asia | United States

Contact enquiries@zenithinteriors.com to find your local distributor.

shortlisted
dezeen
awards 2023



Best Design Awards
Winner 2023



dennchair.com

Zenith

zenithinteriors.com