

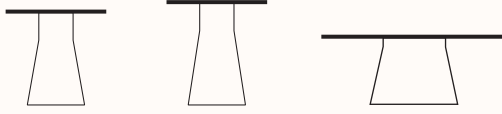
ANDREU World Finishes Specification



CONTENTS:

Reverse Occasional Table	2.
Reverse Conference Table	3.
Reverse High Table	4.
Smart Chair & Stool	5.
Nuez Chair & Stool	6.
Nuez Lounge Chair	7.
Leather Categories	8.
Fabric Categories	11.

Reverse Occasional Table



Reverse 45

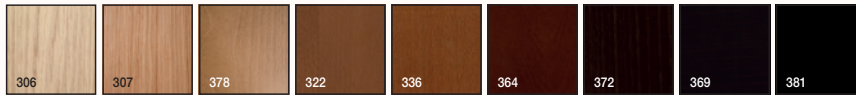
Reverse 55

Reverse 35

Description

Occasional table with polyethylene central base, available in 6 different colors. Available in two heights. Top options include lacquered plywood, oak, Solid Surface, marble, solid core high pressure laminate (HPL), in three shapes, square, elliptical and round, with a measure for every top shape. Optional high gloss lacquer base finish.

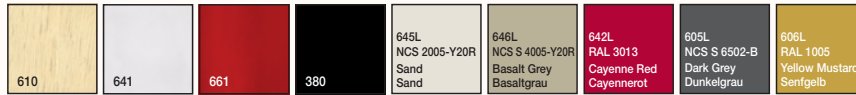
Wood finish



Edge Rand  18 mm.

Oak

Premium finish and wood lacquers



Edge Rand  18 mm.

Tops

Polyethylene finish



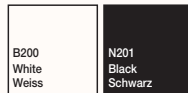
Solid Surface finish



Edge Rand  12 mm.

Compacto HPL

Tops



Edge Rand  12 mm.

Marble finish



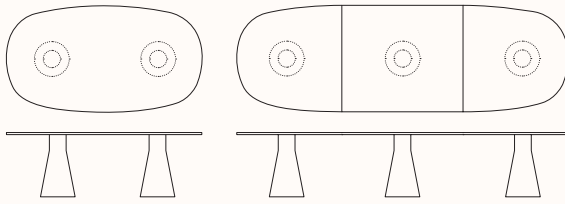
Edge Rand  20 mm.

Certificates

Aluminum Aluminium UNE CEN/TR 581-4 Durability of exterior-grade furniture. Haltbarkeit von Möbel für den Aussenbereich.

Compacto EN 438-6, EN 4382-2-10, EN 4382-2-12, EN 4382-2-14, EN 4382-2-16, EN 4382-2-17, EN 4382-2-21, EN 4382-2-24, EN 4382-2-25, EN 4382-2-26, EN 4382-2-27, EN 4382-2-30, EN 12721. European Standard: UNE EN 13501

Reverse Conference Table

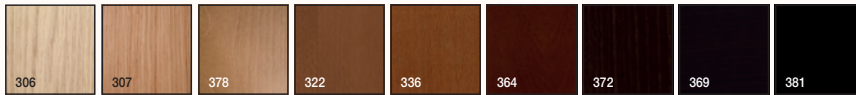


Description

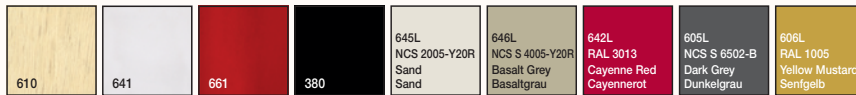
Conference Table using a 100% recyclable polyethylene base and combined with various tops such as natural oak and lacquered. Reverse Conference is offered in 14 standard sizes and its modular system allow for maximum flexibility to have a one single base or multiple bases, making it a very versatile Conference Table for multitude of meeting spaces applications. The table bases are available in matte or gloss finish in 6 different colors. Reverse Conference is also available with wire management.

Wood finish

Oak

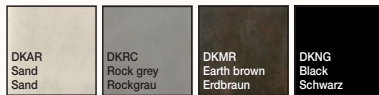


Premium finish and wood lacquers



Dekton Stone finish

Dekton Stone



Laminate



Laminate TP*



*Laminate table top with matching thermopolymer edge.
*Tischplatte Laminat mit passender Terpolymer-Kante.

Glass finish

Tops



Polyethylene finish

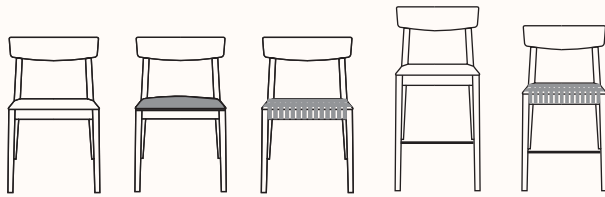


Power box



Suitable for all Reverse Conference collection tables except for those with glass or ceramic tops.

Smart Chair & Stool



Description Stacking chair and barstool with frame and back made of solid beech wood and seat in oak, upholstered or with woven bands.

Upholstery The Smart collection supports following upholsteries of Andreu World Catalogue. For fabrics of our catalogue not specified in this box or custom own materials, contact our Customer Department.

Fabrics / Stoffe

1 Era (20)	3 Jacquard 4 (15)	5 Blazer (60)	8 Capture (25)
Citadel (20)	Main Line Flax (42)	Messenger 4 (44)	Divina 3 (56)
Gravity (30)	Medley (37)	Silk (21)	Fiord (27)
Jacquard 1 (10)	Natte (9)	Step (57)	Harald 3 (30)
Jacquard 3 (15)	Revive 1 (25)	Step Melange (54)	Lopi (15)
Microfibra (14)		Synergy (75)	Tonus 4 (64)
Rivet (24)			Tonus Meadow (24)
Sand (5)	4 Cava 3 (49)	6 Chartres (13)	9 Divina MD (27)
Urban (24)	Field (24)	Clara 2 (24)	Divina Melange 2 (24)
Xtreme (25)	Floyd (23)	Craggan (10)	Hallingdal 65 (58)
	Hemp (21)	Go Check (40)	Steelcut Trio 3 (54)
2 High Tech One (5)	Jacquard 4 Special (15)	Swing (29)	
Jacquard 2 (15)	Nexus (15)		
Solids & Stripes (14)	Oxygen (32)	7 Canvas 2 (45)	
	Remix 2 (49)	Rime (27)	

Faux Leather / Kunstleder

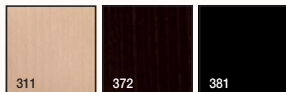
1 Valencia (16)
2 Silvertex (15)
4 Dolce (15)
5 Ledger (28)
7 Sudden (30)

Leather / Leder

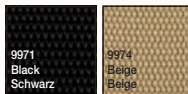
L1 High grade cow leather (21) Kuhlleder
L3 Polished full grain leather (21) Semianilin Leder

Wood finish

Beech



Woven finish



Certificates

Fireproof polyurethane foam

- UNE EN 1021:2006
- BS 5852 part 2 crib 5
- UNI 9175 Classe 1 IM
- BKZ 5.2
- California TB 117:2013
- California TB 133*

Quality - Resistance -UNE EN 16139:2013

Nuez Chair & Stool



Description
Beschreibung Chairs, armchairs and barstools with Eco thermo-polymer shell available in several colors or Pure Eco thermo-polymer (100% recycled) available in sand color. The available base options are: 4 legs solid ash wood, 4-star solid ash wood central swivel base with self-return and height adjustable, steel oval cantilever base polished chrome finish, white or black, 4-star aluminum central swivel base with self-return or central swivel base with 5 casters, all in polished aluminum finish, white or black. Optional upholstered seat pad or shell pad.

Chaises, fauteuils et tabourets avec coque en thermopolymère Eco disponible en plusieurs coloris ou thermopolymère Pure Eco (100% recyclable) disponible en couleur sable. Assise avec galette tapissée ou intérieur tapissé. Disponible avec un pied central 4 branches, pivotant avec retour automatique ou à roulettes, 4 pieds en frêne teinté ou laqué, pied luge ou cantilever en acier.

Upholstery
Bezug The Nuez Chair collection supports following upholsteries of Andreu World Catalogue. For fabrics in our catalogue not specified in this box or customers own materials please contact our Customer Service Department.

für die Kollektion Nuez Chair sind folgende Bezugsmaterialien des Andreu World Kataloges geeignet. Materialien ausserhalb dieses Kataloges und Kundenmaterialien bitte mit unserer Verkaufsabteilung überprüfren.

Fabrics / Stoffe

1 Jacquard One
 Jacquard Three
 Citadel
 Sand
 Era
 Gravity
 Rivet
 Urban

2 Jacquard Two
 Loom One
 Circular One Pure Eco

3 Jacquard Four
 Medley
 Revive 1
 Maglia
 Main Line Flax
 Loom Two
 Reflect
 Mezzo

4 Jacquard 4 Special
 Nexus
 Floyd
 Remix 3
 Heritage
 Savane
 Loom Three
 Loom Four
 Cura
 Oceanic

5 Silk
 Synergy
 Step
 Step Melange
 Blazer
 Melange Nap
 Glow
 Chili
 Noma
 Re-wool

6 Go check
 Swing
 Chartres
 Loom Five
 Zori
 Patio

7 Canvas 2
 Rime
 Select
 Clara 2

8 Capture
 Fiord 2
 Tonus 4
 Divina 3
 Lopi
 Domino
 Ultraleather Original
 Ultraleather Linen
 Ultraleather Pearlized

9 Divina MD
 Divina Melange 3
 Hallingdal 65
 Steelcut Trio 3
 Brisa Original
 Brisa Distressed
 Brisa Fresco
 Brisa Mokume
 Ultraleather Cora Outdoor
 Ultraleather Pony
 Ultraleather Pro
 Ultraleather Promessa

9 Ultraleather Promessa Outdoor
 Ultratech Dwell
 Ultratech EcoTech

10 Brisa Distressed Outdoor
 Ultraleather Distressed Outdoor
 Ultratech Helix
 Ultratech Wired

11 Ultraleather Reef Pro
 Ultraleather Volar Bio
 Ultratech Cove

Faux Leather / Kunstleder

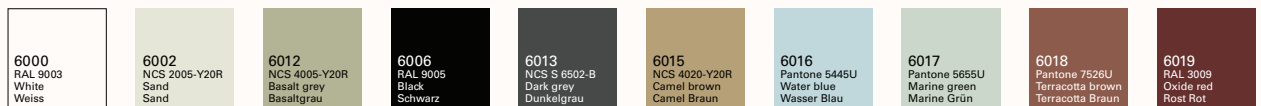
1 Valencia
2 Silvertex
4 Dolce

Leather / Leder

L1 High grade cow leather
 Kuhleder
L3 Polished full grain leather
 Semianilin Leder
L6 Aniline leather batik-effect.
 Scandinavian cattle.
 Skandinavische Kühe.

Eco Thermo-polymer finish

Eco
Terpolymerausführungen



Pure Eco Thermo-polymer finish

Pure Eco
Terpolymerausführungen



Aluminum finish

Aluminiumausführungen



Wood finish Ash

Holzausführungen
Esche



Steel finish

Stahlausführungen



Nuez Lounge Chair



Description
Beschreibung

High-back lounge chairs with BIO thermopolymer shell available in different colors and padded seat and backrest. Upholstered seat cushion. The available bases are: 4-star aluminum central swivel base with return system available in polished aluminum, white or black finish and 4-star central swivel base in solid ash. Available options: tilting system and auxiliary cushion. Upholstered footrest version available.

Sessel, hohe Rückenlehne mit BIO Terpolymer Sitzschale, spiegelpolsterung im Sitz und Rücken. Die verfügbaren Untergestelle sind: drehbarer 4-Sternfuss aus Alu, mit Rückkehrmechanik. Ausführung in Alu poliert, weiss oder schwarz und drehbarer 4-Sternfuss aus Eschenholz. verfügbare Optionen: Kippmechanik und Loses Kissen. Erhältlich Gepolsteter Hocker Version.

Upholstery
Bezug

The Nuez Lounge BIO collection supports following upholsteries of Andreu World Catalogue. For fabrics of our catalogue not specified in this box or custom own materials, contact our Customer Department.

für die Kollektion Nuez Lounge BIO sind folgende Bezugsmaterialien des Andreu World Kataloges geeignet. Materialien ausserhalb dieses Kataloges und Kundenmaterialien bitte mit unserer Verkaufsabteilung überprüfen.

Fabrics / Stoffe

- 1** Jacquard One
Jacquard Three
Citadel
Sand
Era
Gravity
Rivet
Urban

- 2** Jacquard Two
Loom One
Circular One Pure Eco

- 3** Jacquard Four
Medley
Revive 1
Maglia
Main Line Flax
Loom Two

- 4** Jacquard 4 Special
Nexus
Floyd
Remix 2
Heritage
Savane
Loom Three

- 5** Silk
Synergy
Step
Step Melange
Messenger 5
Blazer
Melange Nap
Glow
Chili
Noma

- 6** Go check
Swing
Chartree

- 8** Capture
Fiord 2
Tonus 4
Divina 3
Lopi

- 9** Divina MD
Divina Melange 3
Hallingdal 65
Steelcut Trio 3

Faux Leather / Kunstleder

- 1** Valencia
2 Silvertex
4 Dolce
6 Ledger

Leather / Leder

- L1** High grade cow leather
Kuhleder
L3 Polished full grain leather
Semianilin Leder
L6 Aniline leather batique-effect.
Scandinavian cattle.
Anilinleder mit Batik-Effekt

Wood finish Ash
Holzausführungen
Esche

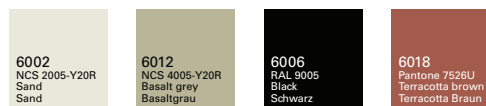


Premium finish and wood lacquers
Premium
Ausführungen und
Holzlacke



Bio Thermo-polymer
finish

Bio
Terpolymerausführungen



Aluminum finish

Aluminiumausführungen



Andreu World Leather

Leather Piel / Cat. L1

Composition / Composición
First categorie cow leather
Piel de vaca de 1ª categoría

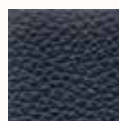
Not suitable for loose cover. Dry
cleaning recommended.
No válido para funda. Se
recomienda su lavado en seco.



4210



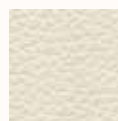
4025



4029



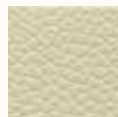
4034



4035



4047



4075



4076



4077



4084



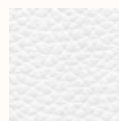
4085



4224



4225



4226



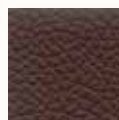
4228



4229



4231



4232



4234



4235

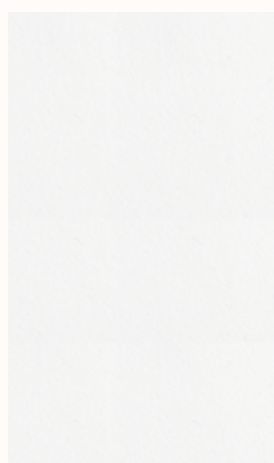


4236

Hide Leather Cuero / Cat. L2

Composition / Composición
Chrome tanned split leather.
Base in polyurethane resin
emulsion in water. Cellulose
nitric varnish.
Costra cocida al cromo. Base
de emulsiones de resinas
poliuretánicas en agua. Barniz
nitro celulósico.

Not suitable for loose cover. Dry
cleaning recommended.
No válido para funda. Se
recomienda su lavado en seco.



4050



4051



4052



4053



4054



4055



4056



4057



4058



4061

Andreu World Leather

Leather Piel / Cat. L3

Composition / Composición
Polished full grain leather
Plena flor pulida

The leathers have passed comprehensive processes of classification and treatment. The naturalness makes the texture appreciated from the marks and irregularities of the leather.
Las pieles han pasado exhaustivos procesos de clasificación y tratamiento. La naturalidad hace que en su textura se aprecien ciertas marcas e irregularidades propias de la piel.

Not suitable for loose cover. Dry cleaning recommended.
No válido para funda. Se recomienda su lavado en seco.



1800



1801



1802



1803



1804



1805



1806



1809



1810



1811



1812



1813



1815



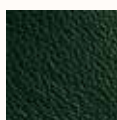
1816



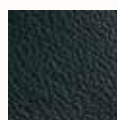
1818



1819



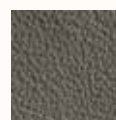
1820



1821



1822



1823



1824

Andreu World Textiles

Microfibra Microfibre / Cat. 1

Composition / Composición
Surface / Superficie 100% Pol.
Backing / Soporte 67% Pol. 33%
CO

Martindale test /
Resistencia a la abrasión
> 40.000 Cycles / Ciclos (BS
5690:91)

Not suitable for loose cover. Dry
cleaning recommended.
No válido para funda. Se
recomienda su lavado en seco.



1500



1501



1502



1503



1504



1505



1507



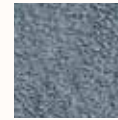
1508



1510



1511



1512



1514



1515



1516

Jacquard One / Cat. 1

Composition / Composición
48% PP. 33% PES. 19% CO.

Martindale test /
Resistencia a la abrasión
> 31.000 Cycles / Ciclos
(EN ISO 12947-2 min. 20.000)

Suitable for loose cover. Dry
cleaning recommended.
Válido para funda. Se
recomienda su lavado en seco.



1721



1714



1715



1716



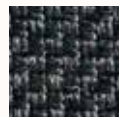
1717



1718



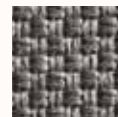
1722



1723



1726



1727

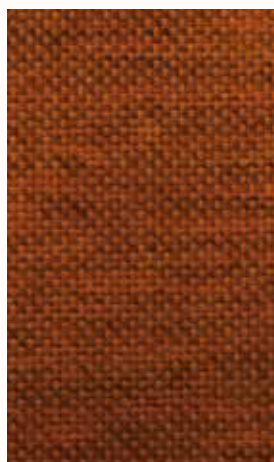
Andreu World Textiles

Jacquard Three / Cat. 1

Composition / Composición
50% PP. 31% PE. 19% CO

Martindale test /
Resistencia a la abrasión
32.500 Cycles / Ciclos
(EN ISO 12947-2:1998)

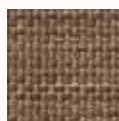
Suitable for loose cover. Dry
cleaning recommended.
Válido para funda. Se recomienda
su lavado en seco.



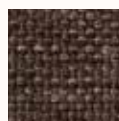
1746



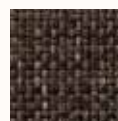
1740



1741



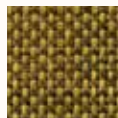
1742



1743



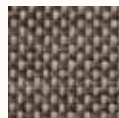
1744



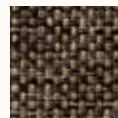
1745



1747



1749



1750



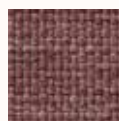
1751



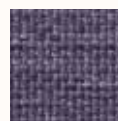
1752



1754



1755



1756

Jacquard Two / Cat. 2

Composition / Composición
89% PES. 11% CO.

Martindale test /
Resistencia a la abrasión
> 60.000 Cycles / Ciclos
(EN ISO 12947-2 min. 20.000)

Suitable for loose cover. Dry
cleaning recommended.
Válido para funda. Se recomienda
su lavado en seco.



1709



1700



1701



1702



1703



1704



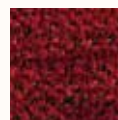
1705



1706



1707



1711



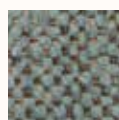
1712



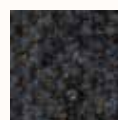
1713



1730



1731



1732

Andreu World Textiles

High Tech One / Cat. 2

Composition / Composición
100% Polyester/Poliéster

Martindale test /
Resistencia a la abrasión
80.000 Cycles / Ciclos

Assesment of ignability /
Ignifugabilidad: Calif. Bull. 117E,
BS EN 1021 1&2, Önorm B 3825
B1 3800-Q1 UK, AM 18 - NF D
60-013, UNI 9175 Class 1 I EMME,
NFP 92-503:M3

Not suitable for loose cover. Dry
cleaning recommended.
No válido para funda. Se
recomienda su lavado en seco.



7001



7000

7002

7003

7008

High Tech Two / Cat. 6

Composition / Composición
100% Polyester/Poliéster

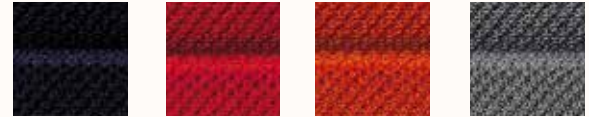
Martindale test /
Resistencia a la abrasión
80.000 Cycles / Ciclos

Assesment of ignability /
Ignifugabilidad: Calif. Bull. 117E,
BS EN 1021 1&2, Önorm B 3825
B1 3800-Q1 UK, AM 18 - NF
D 60-013, UNI 9175 Class 1 I
EMME, NFP 92-503:M3

Not suitable for loose cover. Dry
cleaning recommended.
No válido para funda. Se
recomienda su lavado en seco.



7005



7004

7006

7007

7009

Woven bands / Cinchas

Composition / Composición
100% Polipropilene/Polipropileno

Protection UV radiation and
climatic agents.
Protección rayos UV y agentes
climáticos.

ISO certification 105-B02
Certificación ISO 105-B02

Clean regularly with water and
soap.
Limpiar regularmente con agua
y jabón.



9971
Graphite
Grafito



9972
Earth Brown
Marrón Tierra



9974
Sand
Arena



9973
White
Blanco

Kvadrat Textiles / Telas Kvadrat

Cava 3 / Cat. 4

Composition / Composición
 90% Wool 10% Nylon
 90% Lana 10% Nylon

Martindale test /
 Resistencia a la abrasión
 80.000 Cycles / Ciclos

Assesment of ignability /
 Ignifugabilidad:
 EN 1021-1/2 ignition source 0-1;
 BS 5852 ignition source 2-3;
 Önorm B1/Q1; NF D 60 013; UNI
 9175 1IM; US Cal. Tech Bull 117;
 IMO A.652(16)

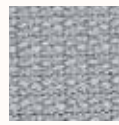
No válido para funda. Se
 recomienda su lavado en seco.
 Not suitable for loose cover. Dry
 cleaning recommended.



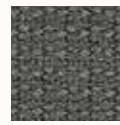
464



124



132



142



153



162



184



192



212



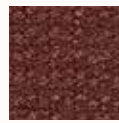
223



232



344



364



373



414



422



432



442



453



543



552



563



633



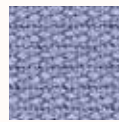
642



652



662



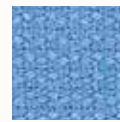
673



683



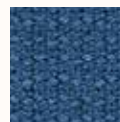
722



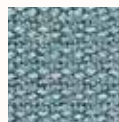
732



742



752



763



772



782



793



794



833



843



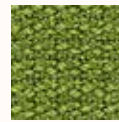
852



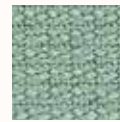
862



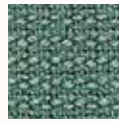
872



883



932



953



962



972



982



993

Kvadrat Textiles / Telas Kvadrat

Remix 2 / Cat. 4

Composition / Composición
 90% Wool 10% Nylon
 90% Lana 10% Nylon

Martindale test /
 Resistencia a la abrasión
 100.000 Cycles / Ciclos

Assesment of ignability /
 Ignifugabilidad:
 EN 1021-1/2 ignition source 0-1;
 BS 5852 ignition source 2-3;
 Önorm B1/Q1; NF D 60 013; UNI
 9175 1IM; US Cal. Tech Bull 117;
 IMO A.652(16)

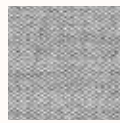
No válida para funda. Se
 recomienda su lavado en seco.
 Not suitable for loose cover. Dry
 cleaning recommended.



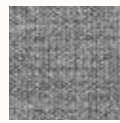
643



113



123



133



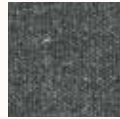
143



152



163



173



183



223



233



242



252



362



373



383



393



412



422



433



443



452



543



612



632



653



662



672



682



692



722



733



743



753



762



773



783



823



842



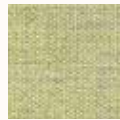
852



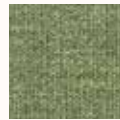
873



912



923



933



942



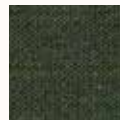
954



962



973



982

Kvadrat Textiles / Telas Kvadrat

Field / Cat. 4

Composition / Composición
100% Trevira

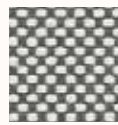
Martindale test
Resistencia a la abrasión /
100.000 Cycles / Ciclos

Assesment of ignability /
Ignifugabilidad:
EN 1021-1/2 ignition source 0-1;
BS 5852 ignition source 2-3;
Örnom B1/Q1; NF D 60 013; UNI
9175 1IM; US Cal. Tech Bull 117;
IMO A.652(16)

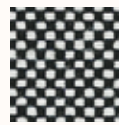
Not suitable for loose cover. Dry
cleaning recommended.
No válido para funda. Se
recomienda su lavado en seco.



542



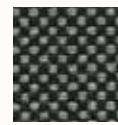
132



142



172



182



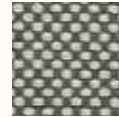
192



222



232



242



252



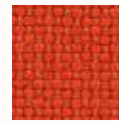
382



432



642



662



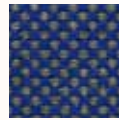
682



752



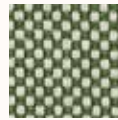
762



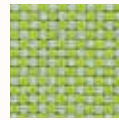
772



782



932



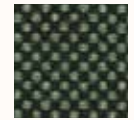
942



952



972



982

Clara 2 / Cat. 6

Composition / Composición
92% Wool 8% Nylon
92% Lana 8% Nylon

Martindale test /
Resistencia a la abrasión
80.000 Cycles / Ciclos

Assesment of ignability /
Ignifugabilidad:
EN 1021-1/2 ignition source 0-1;
BS 5852 ignition source 2-3; DIN
4102 B2; Örnom B1/Q1; NF D 60
013; UNI 9175 1IM; US Cal. Tech
Bull 117; IMO A.652(16)

Not suitable for loose cover. Dry
cleaning recommended.
No válido para funda. Se
recomienda su lavado en seco.



548



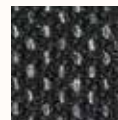
144



148



184



188



244



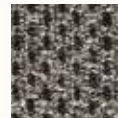
248



273



277



384



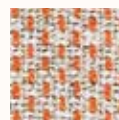
388



423



427



544



643



647



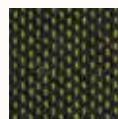
797



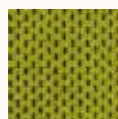
884



888



933



937



793



983



987

Kvadrat Textiles / Telas Kvadrat

Messenger 4 / Cat. 5

Composition / Composición
 78% Post. industrial recycled polyester 15% Polyester 7% Nylon
 78% Poliéster reciclado 15% Poliéster 7% Nylon

Martindale test / Resistencia a la abrasión
 65.000 Cycles / Ciclos

Assesment of ignability / Ignifugabilidad:
 EN 1021-1 Cal. Tech. Bull. 117

Suitable for loose cover. Dry cleaning recommended.
 Válido para funda. Se recomienda su lavado en seco.



025



001



006



007



008



010



024



029



031



038



040



041



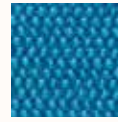
045



046



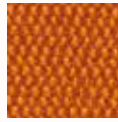
048



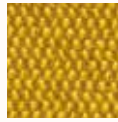
050



051



053



054



058



059



060



061



062



063



066



067



069



070



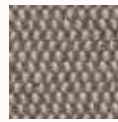
071



072



076



077



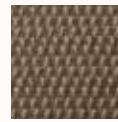
078



079



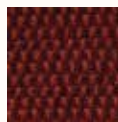
080



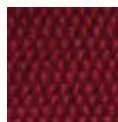
081



082



083



084



085



086



087



088

Kvadrat Textiles / Telas Kvadrat

Plot / Cat. 5

Composition / Composición
100% Trevira

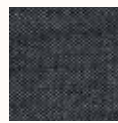
Martindale test
Resistencia a la abrasión /
45.000 Cycles / Ciclos

Assesment of ignability /
Ignifugabilidad:
EN 1021-1 Cal. Tech. Bull. 117

Suitable for loose cover. Dry
cleaning recommended.
Válido para funda. Se recomienda
su lavado en seco.



453



143



183



193



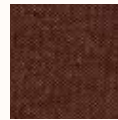
213



233



243



333



343



353



363



373



423



443



463



553



563



613



623



633



653



673



693



713



723



733



743



783



813



833



843



853



863

Kvadrat Textiles / Telas Kvadrat

Ledger / Cat. 5

Composition / Composición
 100% Polyurethane
 100% Poliuretano

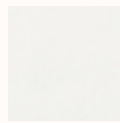
Martindale test
 Resistencia a la abrasión /
 > 100.000 Cycles / Ciclos

Assesment of ignability /
 Ignifugabilidad:
 California Bulletin # 117 NFPA 260

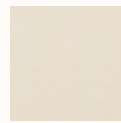
Not suitable for loose cover. Dry
 cleaning recommended.
 No válido para funda. Se
 recomienda su lavado en seco.



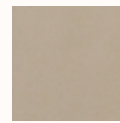
022



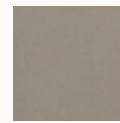
001



002



003



004



017



025



026



027



028



029



030



031



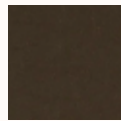
032



033



034



035



036



037



038



039



040



041



042



043



044



045



046

Kvadrat Textiles / Telas Kvadrat

Sudden / Cat. 7

Composition / Composición
100% Polyurethane
100% Poliuretano

Martindale test
Resistencia a la abrasión /
> 100.000 Cycles / Ciclos

Assesment of ignability /
Ignifugabilidad:
EN 1021-1/2 ignition source 0; US
Cal. Tech. Bull 117

Not suitable for loose cover. Dry
cleaning recommended.
No válido para funda. Se
recomienda su lavado en seco.



Kvadrat Textiles / Telas Kvadrat

Divina 3 / Cat. 8

Composition / Composición
 100% Wool
 100% Lana

Martindale test /
 Resistencia a la abrasión
 45.000 Cycles / Ciclos

Assesment of ignability /
 Ignifugabilidad:
 EN 1021-1/2 ignition source 0-1;
 BS 5852 ignition source 2-5; DIN
 4102 B2; Önorm B1/Q1; NF D 60
 013; UNI 9175 1IM; US Cal. Tech
 Bull 117; IMO A.652(16)

Not suitable for loose cover. Dry
 cleaning recommended.
 No válido para funda. Se
 recomienda su lavado en seco.



626



106



154



171



173



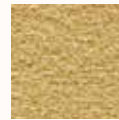
181



191



224



236



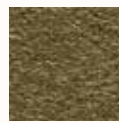
246



334



346



356



376



384



393



426



444



462



526



536



542



552



562



584



623



636



652



662



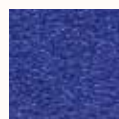
666



671



676



684



686



691



692



696



712



742



756



782



791



793



826



836



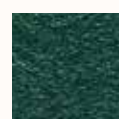
846



856



876



886



893



922



936



944



956



966



984

Kvadrat Textiles / Telas Kvadrat

Tonus 4 / Cat. 8

Composition / Composición
 90% Wool 10% Helanca
 90% Lana 10% Helanca

Martindale test
 Resistencia a la abrasión /
 > 50.000 Cycles / Ciclos

Assesment of ignability /
 Ignifugabilidad:
 EN 1021-1/2 ignition source 0-1;
 BS 5852 ignition source 2-3;
 Önorm B1/Q1; NF D 60 013; UNI
 9175 1IM; US Cal. Tech. Bull 117;
 IMO A.652(16); NFPA 260

Not suitable for loose cover. Dry
 cleaning recommended.
 No válido para funda. Se
 recomienda su lavado en seco.



Kvadrat Textiles / Telas Kvadrat

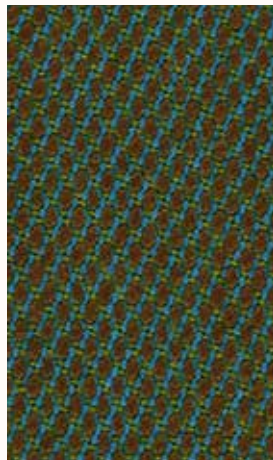
Steelcut Trio 2 / Cat. 9

Composition / Composición
 90% Wool 10% Nylon
 90% Lana 10% Nylon

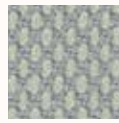
Martindale test /
 Resistencia a la abrasión
 80.000 Cycles / Ciclos

Assesment of ignability /
 Ignifugabilidad:
 EN 1021-1/2 ignition source 0-1;
 BS 5852 ignition source 2-5; DIN
 4102 B2; Önorm B1/Q1; NF D 60
 013; UNI 9175 1IM; US Cal. Tech
 Bull 117; IMO A.652(16)

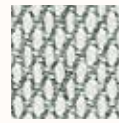
Suitable for loose cover. Dry
 cleaning recommended.
 Válido para funda. Se recomienda
 su lavado en seco.



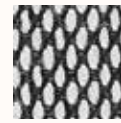
965



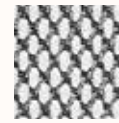
105



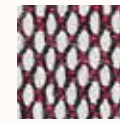
113



124



133



144



153



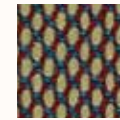
195



205



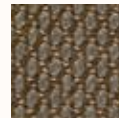
213



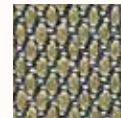
225



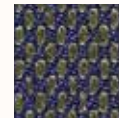
235



245



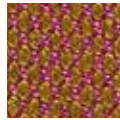
253



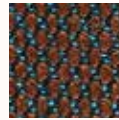
283



325



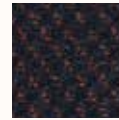
333



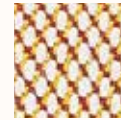
353



383



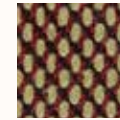
395



413



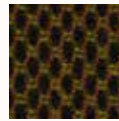
415



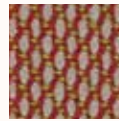
425



453



465



515



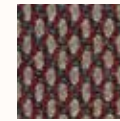
533



553



565



645



653



665



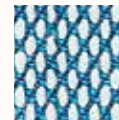
675



683



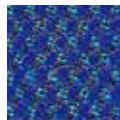
713



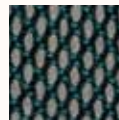
733



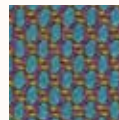
745



753



815



825



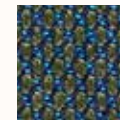
845



853



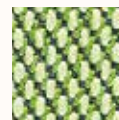
865



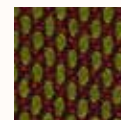
883



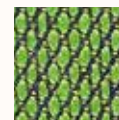
915



933



945



953



983

Kvadrat Textiles / Telas Kvadrat

Divina MD / Cat. 9

Composition / Composición
100% Wool
100% Lana

Martindale test /
Resistencia a la abrasión
45.000 Cycles / Ciclos

Assesment of ignability /
Ignifugabilidad:
EN 1021-1/2 ignition source 0-1;
BS 5852 ignition source 2-5; DIN
4102 B2; Önorm B1/Q1; NF D 60
013; UNI 9175 1IM; US Cal. Tech
Bull 117; IMO A.652(16)

Not suitable for loose cover. Dry
cleaning recommended.
No válido para funda. Se
recomienda su lavado en seco.



433



193



203



213



293



343



353



363



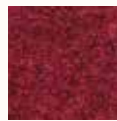
413



453



613



633



653



673



683



713



733



743



753



773



783



813



843



873



913



943



973

Divina Melange / Cat. 9

Composition / Composición
100% Wool
100% Lana

Resistencia a la abrasión /
Martindale test
45.000 Cycles / Ciclos

Assesment of ignability /
Ignifugabilidad:
EN 1021-1/2 ignition source 0-1;
BS 5852 ignition source 2-5; DIN
4102 B2; Önorm B1/Q1; NF D 60
013; UNI 9175 1IM; US Cal. Tech
Bull 117; IMO A.652(16)

Not suitable for loose cover. Dry
cleaning recommended.
No válido para funda. Se
recomienda su lavado en seco.



421



120



170



180



220



260



280



471



521



531



571



581



620



671



681



631



721



731



771



821



871



920



931



971

Kvadrat Textiles / Telas Kvadrat

Hallingdal 65 / Cat. 9

Composition / Composición
70% Wool 30% Viscose
70% Lana 30% Viscosa

Martindale test /
Resistencia a la abrasión
100.000 Cycles / Ciclos

Assesment of ignability /
Ignifugabilidad:
EN 1021-1/2 ignition source 0-1;
BS 5852 ignition source 2-5; DIN
4102 B2; Önorm B1/Q1; NF D 60
013; UNI 9175 1IM; US Cal. Tech
Bull 117; IMO A.652(16)

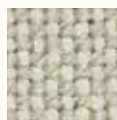
Not suitable for loose cover. Dry
cleaning recommended.
No válido para funda. Se
recomienda su lavado en seco.



547



100



103



110



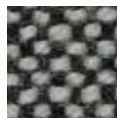
113



116



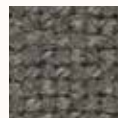
123



126



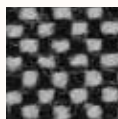
130



143



153



166



173



180



190



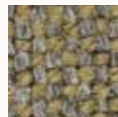
200



220



224



227



270



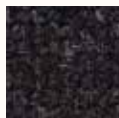
350



368



370



376



390



407



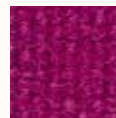
420



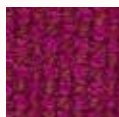
457



526



563



573



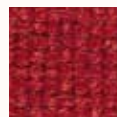
590



596



600



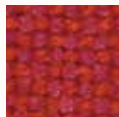
657



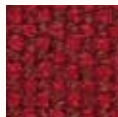
660



674



680



687



694



702



723



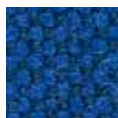
733



750



753



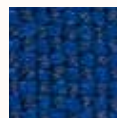
754



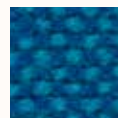
763



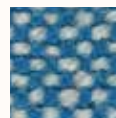
764



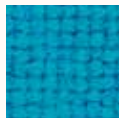
773



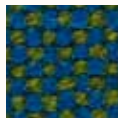
810



840



850



890



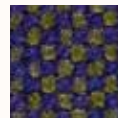
907



944



960



968



980

Camira Textiles / Telas Camira

Xtreme / Cat. 1

Composition / Composición
100% Polyester
100% Poliéster

Martindale test /
Resistencia a la abrasión
100.000 Cycles / Ciclos

Assesment of ignability /
Ignifugabilidad:
BS EN 1021-1:2006 (cigarette
test), BS EN 1021-2:2006 (match),
BS 7176:2007 Low Hazard, BS
5852:2006 Section 4 Ignition
Source 5, BS 7176:2007 Medium
Hazard, DIN 4102 B1, UNI
8456&UNI 9174 Classe1

Suitable for loose cover.
Válido para funda.



AW C098
Camira Ys106



AW C085
Camira Ys101



AW C082
Camira Ys079



AW C088
Camira Ys076



AW C091
Camira Ys136



AW C093
Camira Ys161



AW C084
Camira Ys159



AW C079
Camira Ys145



AW C076
Camira Ys009



AW C081
Camira YS046



AW C086
Camira Ys084



AW C094
Camira Ys097



AW C083
Camira Ys100



AW C095
Camira YS035



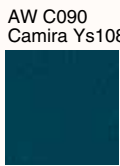
AW C080
Camira YS005



AW C092
Camira YS171



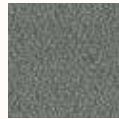
AW C100
Camira YS083



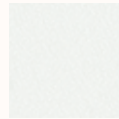
AW C077
Camira YS026



AW C097
Camira YS091



AW C078
Camira YS081



AW C096
Camira Ys165



AW C089
Camira YS094



AW C099
Camira Ys086



AW C087
Camira Ys172

Urban / Cat. 1

Composition / Composición
100% Polyester
100% Poliéster

Resistencia a la abrasión /
Martindale test
100.000 Cycles / Ciclos

Assesment of ignability /
Ignifugabilidad:
BS EN 1021-1:2006 (cigarette
test), BS EN 1021-2:2006 (match),
BS 7176:2007 Low Hazard, BS
5852:2006 Section 4 Ignition
Source 5, BS 7176:2007 Medium
Hazard, DIN 4102 B1, NF D 60-
013:2006, NF-P-92-507 M1, UNI
8456&UNI 9174 Classe 1

Suitable for loose cover.
Válido para funda.



AW C028
Camira Yn079



AW C035
Camira Yn076



AW C046
Camira Yn027



AW C050
Camira Yn201



AW C033
Camira Yn204



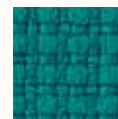
AW C036
Camira Yn211



AW C030
Camira Yn200



AW C047
Camira Yn159



AW C043
Camira Yn160



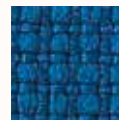
AW C048
Camira Yn190



AW C034
Camira Yn210



AW C037
Camira Yn097



AW C039
Camira Yn082



AW C040
Camira Yn209



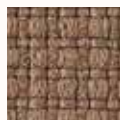
AW C041
Camira Yn083



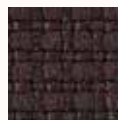
AW C032
Camira Yn207



AW C045
Camira Yn205



AW C049
Camira Yn091



AW C044
Camira Yn086



AW C042
Camira Yn212



AW C031
Camira Yn094



AW C029
Camira Yn206



AW C026
Camira Yn009



AW C027
Camira Yn145

Camira Textiles / Telas Camira

Sprint / Cat. 1

Composition / Composición
100% Polyester
100% Poliéster

Martindale test /
Resistencia a la abrasión
100.000 Cycles / Ciclos

Assesment of ignability /
Ignifugabilidad:
BS EN 1021-5:2014 (cigarette test),
BS EN 1021-2:2014 (match), BX
7176:2007 Low Hazard

Suitable for loose cover.
Válido para funda.



AW C069
Camira Ps015



AW C053
Camira Ps016



AW C066
Camira Ps007



AW C075
Camira Ps010



AW C074
Camira Ps017



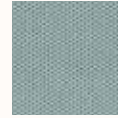
AW C059
Camira Ps008



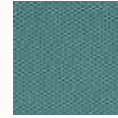
AW C064
Camira Ps011



AW C061
Camira Ps032



AW C067
Camira Ps039



AW C068
Camira Ps041



AW C073
Camira Ps019



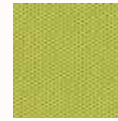
AW C054
Camira Ps033



AW C071
Camira Ps042



AW C070
Camira Ps020



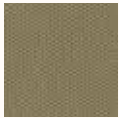
AW C063
Camira PS026



AW C065
Camira Ps 027



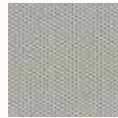
AW C060
Camira PS024



AW C062
Camira PS023



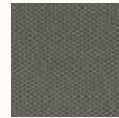
AW C058
Camira Ps001



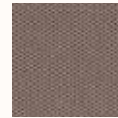
AW C056
Camira PS028



AW C057
Camira Ps030



AW C052
Camira PS029



AW C055
Camira Ps003



AW C051
Camira PS005

Main Line Flax / Cat. 3

Composition / Composición
70% Virgin Wool 30% Flax
70% Lana Virgen 30% Lino

Martindale test /
Resistencia a la abrasión
50.000 Cycles / Ciclos

Assesment of ignability /
Ignifugabilidad:
BS EN 1021-1:2014 (cigarette
test), BS EN 1021-2:2014 (match),
BS 7176:2007 Low Hazard, BS
5852:2006 Section 4 Ignition
Source 5, BS 7176:2007 Medium
Hazard

Suitable for loose cover.
Válido para funda.



AW C102
Camira Mlf20



AW C106
Camira Mlf17



AW C101
Camira Mlf08



AW C103
Camira Mlf01



AW C104
Camira Mlf13



AW C105
Camira Mlf06



AW C108
Camira Mlf14



AW C107
Camira Mlf02



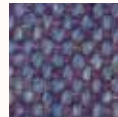
AW C109
Camira Mlf26



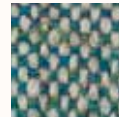
AW C110
Camira Mlf04



AW C115
Camira Mlf33



AW C112
Camira Mlf27



AW C113
Camira Mlf24



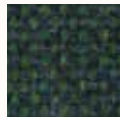
AW C114
Camira Mlf09



AW C111
Camira Mlf23



AW C116
Camira Mlf18



AW C123
Camira Mlf32



AW C117
Camira Mlf37



AW C118
Camira Mlf05



AW C120
Camira Mlf34



AW C121
Camira Mlf19



AW C124
Camira Mlf35



AW C122
Camira Mlf16



AW C125
Camira Mlf28

Camira Textiles / Telas Camira

Blazer / Cat. 5

Composition / Composición
100% Virgin Wool
100% Lana Virgen

Martindale test /
Resistencia a la abrasión
50.000 Cycles / Ciclos

Assesment of ignability /
Ignifugabilidad:
BS EN 1021-1:2014 (cigarette
test), BS EN 1021-2:2014 (match),
BS 7176:2007 Medium Hazard,
BS 5852:2006 Section 4 Ignition
Source 5

Not suitable for loose cover.
No válido para funda.



AW C002
Camira Cuz28



AW C021
Camira Cuz82



AW C011
Camira Cuz39



AW C022
Camira Cuz18



AW C008
Camira Cuz63



AW C007
Camira Cuz13



AW C013
Camira Cuz86



AW C015
Camira Cuz1B



AW C018
Camira Cuz46



AW C024
Camira Cuz1X



AW C010
Camira Cuz53



AW C006
Camira Cuz02



AW C017
Camira Cuz26



AW C025
Camira Cuz24



AW C019
Camira Cuz09



AW C004
Camira Cuz12



AW C003
Camira Cuz14



AW C014
Camira Cuz47



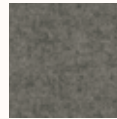
AW C020
Camira Cuz31



AW C016
Camira Cuz1G



AW C012
Camira Cuz1E



AW C001
Camira Cuz1J



AW C005
Camira Cuz30



AW C023
Camira Cuz67



AW C009
Camira Cuz08

Spradling Textiles / Telas Spradling

Valencia / Cat. 1

Composition / Composición
Topcoat/Capa: 100% Vinyl/Vinilo
Backing/Soport: 100% Polyester/
Poliéster.

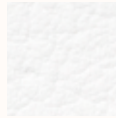
Martindale test /
Resistencia a la abrasión
>300.000 Cycles / Ciclos

Assesment of ignability /
Ignifugabilidad:
NF P 92-503/M2, EN 1021, Part
1&2, Önorm B3825, Gruppe
I-Schwebrebbbares Verhalten, Önorm
A 3800, Teil I, Qualmbildungsklasse
QI-schwachqualmend, IMO A
652(16) Annex I, 8,2 and 8,3, (MED)
Council Directive 96/98 EC on marine
equipment, UNI 9175 (1987)/UNI
9175/FAI(1994) Classe I.IM (uno I
EMME), UNE 23.727-90 IR/M2, EN 71-
2:2006+A1:2007 Safety of Toys-Part2:
Flammability, Directive 95/28/CE,
FMVSS 302, FAR 25/853

Not suitable for loose cover. Dry
cleaning recommended.
No válido para funda. Se recomienda
su lavado en seco.



**107-8032
Weiss**



**107-9486
Pure White**



**107-1049
Leinen**



**107-1050
Beige**



**107-9001
Sumatra**



**107-0034
Taupe**



**107-4041
Meteor**



**107-6013
Melone**



**107-0035
Terracotta**



**107-0033
Buche**



**107-0020
Mocca**



**107-6003
Nectarine**



**107-2074
Kirsche**



**107-2062
Port**



**107-3068
Marine**



**107-9035
Schwarz**

Dolce / Cat. 4

Composition / Composición
Topcoat/Capa: 100% Polyurethane/
Poliuretano
Backing/Soport: 100% Rayon

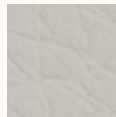
Martindale test /
Resistencia a la abrasión
>300.000 Cycles / Ciclos

Assesment of ignability /
Ignifugabilidad:
EN 1021, Part 1&2, IMO A 652(16)
Annex I, 8,2 and 8,3, FMVSS 302,
CA Tech 117, Section E, NFPA 260-
Class 1

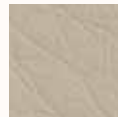
Not suitable for loose cover. Dry
cleaning recommended.
No válido para funda. Se recomienda
su lavado en seco.



**DOL-6705
Sand**



**DOL-6701
White**



**DOL-6702
Ivory**



**DOL-6704
Dune**



**DOL-6708
Mushroom**



**DOL-6712
Mocha**



**DOL-6709
Camel**



**DOL-6711
Russet**



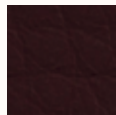
**DOL-6713
Chocolate**



**DOL-6718
Tangelo**



**DOL-6719
Poppy**



**DOL-6714
Burgundy**



**DOL-6725
Indigo**



**DOL-6727
Meteor**



**DOL-6728
Black**

Spradling Textiles / Telas Spradling

Silvertex
Vinyl / Vinilo / Cat. 2

Valid for outdoor /
Válido para outdoor

Composition / Composición
Polyester Hi-loft2.

Martindale test
Resistencia a la abrasión /
> 100.000 Cycles / Ciclos
(EN ISO 12947:1999 Part 2)

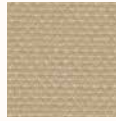
Not suitable for loose cover. Dry
cleaning recommended.
No válido para funda. Se
recomienda su lavado en seco.



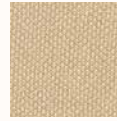
122-2012
Sunkist



122-4004
Ice



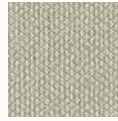
122-1051
Sisal



122-1010
Beige



122-1078
Chapagne



122-5009
Sage



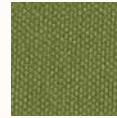
122-0009
Taupe



122-0005
Mocca



122-5019
Celery



122-5020
Basil



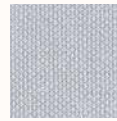
122-6061
Mandarin



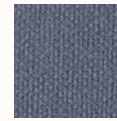
122-3001
Turquoise



122-3066
Baltic



122-4001
Plata



122-4002
Storm



122-2016
Raspberry



122-4024
Meteor



122-9002
Carbon

Andreu World Textiles

Sand / Cat. 1

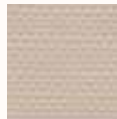
Valid for outdoor /
Válido para outdoor

Composition / Composición
100% Dyed Acrylic Solution / 100%
Acrílico teñido en masa.

Martindale test
Resistencia a la abrasión /
17.000 Cycles / Ciclos
(EN ISO 12947:1999 Part 2)



1180



1181



1183



1182



1184

Sunbrella Textiles / Telas Sunbrella

Solids & Stripes / Cat. 2

Valid for outdoor /
Válido para outdoor

Composition / Composición
100% Sunbrella solution dyed acrylic
100% Acrílico teñido en masa

Martindale test /
Resistencia a la abrasión
20.000 Cycles / Ciclos



5453
Canvas



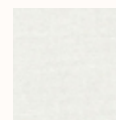
48009 00
Arbor Pebble



5476
Heather Beige



3127
Mink Brown



3741
Silver Grey



3756
Lead Chine



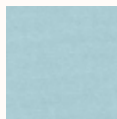
3728
Paris Red



3945
Granny



3767
Kaki



5420
Mineral Blue



3941
Adriatic



5499
True Blue



5439
Navy Blue

Natte / Cat. 3

Valid for outdoor /
Válido para outdoor

Composition / Composición
100% Sunbrella solution dyed acrylic
100% Acrílico teñido en masa

Martindale test /
Resistencia a la abrasión
20.000 Cycles / Ciclos



10020
White



10021
Canvas



10028
Heather Beige



10022
Grey Chine



10029
Heather Grey



10025
Frosty Chine



10064
Carbon Sky



10030
Sooty

Sunbrella Textiles / Telas Sunbrella

Linen / Cat. 3

Valid for outdoor /
Válido para outdoor

Composition / Composición
100% Sunbrella solution dyed acrylic
100% Acrílico teñido en masa

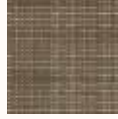
Martindale test /
Resistencia a la abrasión
20.000 Cycles / Ciclos



5453
Canvas



5404
Natural



8374
Taupe



3929
Nut



3926
Optic Orange



3927
Optic Green



3928
Dragonfly



3922
Blue Black