

zenithinteriors.com

KAMI Low Stool

Zenith



Features:

Kami, Japanese for 'sheet of paper', is a playful, stackable creation that combines fantasy and functionality. Formed from plywood, the material is gently folded to create a 3-dimensional construction. The opening in the centre, which during moulding allows for the folding and counter-folding of the seat and legs, enhances the welcoming 'cradle' profile.

Design: MARIO FERRARINI for LAPALMA

Warranty: 5 years

Certification: FSC

Finishes:

Frame & seat: Moulded plywood

Frame & Seat:



Blanched
Oak

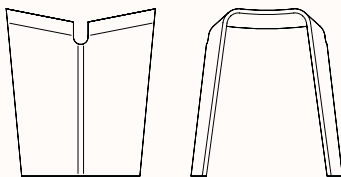


Oak Dark
Walnut



Black Open
Pore

Dimensions:



Low Stool S521

OW 410mm

OD 410mm

OH 460mm