

# Lapalma Finishes Specification



## CONTENTS:

Fabric	
CAT A	<a href="#">2.</a>
CAT B	<a href="#">10.</a>
CAT C	<a href="#">18.</a>
CAT D	<a href="#">31.</a>
CAT E	<a href="#">39.</a>

Soft Leather	
Pelle	<a href="#">41.</a>
Cuoio	<a href="#">42.</a>

# CAT A - Jet FIDIVI

## Application

Contract and domestic use.

## Description

Composition:  
100% Polyester - Trevira CS®  
Width: 140 cm  
Weight: 260 g/m2

## Tests

Abrasion  
UNI EN ISO 12947-2 65000 ± 10% rubs  
  
Pilling  
UNI EN ISO 12945-2 5 (Standard picture)  
Tolerance: from 4 to 5  
  
Colour fastness  
to rubbing UNI EN ISO 105-X12  
(4/5 grey scale)  
Tolerance: from 4 to 5  
to light UNI EN ISO 105-B02 6 (Blue scale)  
Tolerance: from 5 to 8

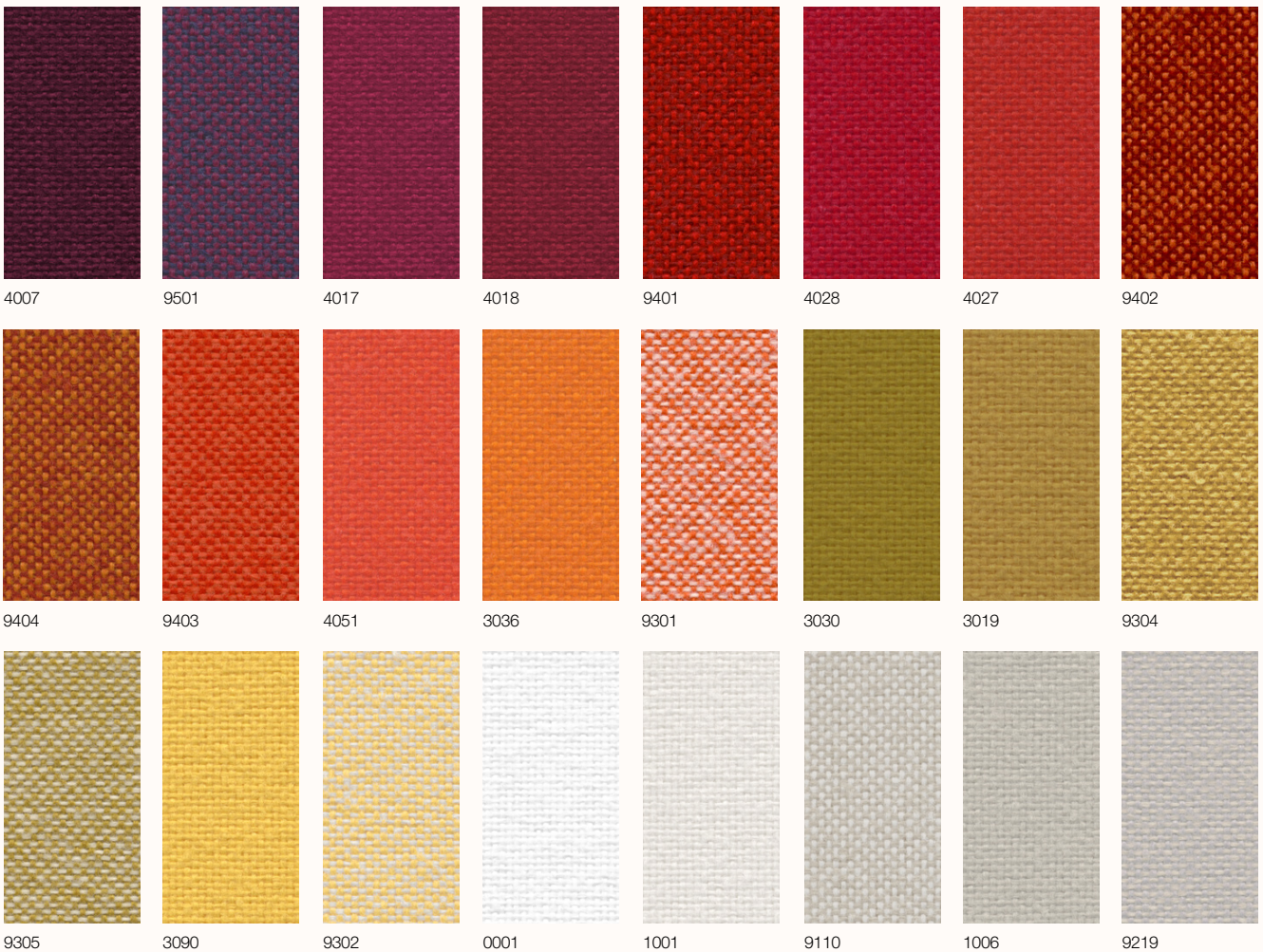
## Flame resistance

C1  
B1  
M1  
CRIB 5  
EN 1021/1-2  
IMO Res. A 652 (16) Part 8  
IMO Res. A 471 (XII) Part 7  
NF D 60013 Class AM 18

## Care

Dry clean or clean with foam detergents.

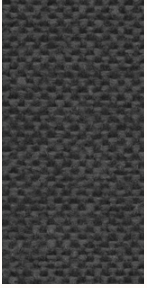
Samples are purely indicative because of natural inconsistencies that occur in the raw materials. As a result there may be small differences in the product delivered.



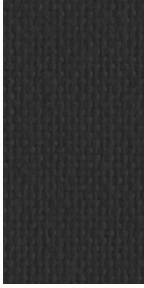
## CAT A - Jet FIDIVI



## CAT A - Jet FIDIVI



9806



8033

# CAT A - Maya FIDIVI

## Application

Contract and domestic use.

## Description

Composition:  
100% Polyester - Trevira CS®

Width: 140 cm

Weight: 420 g/m2

## Tests

Abrasion  
UNI EN ISO 12947-2 100000 ± 10% rubs

Pilling  
UNI EN ISO 12945-2 5 (Standard picture)  
Tolerance: from 4 to 5

Colour fastness  
to rubbing UNI EN ISO 105-X12  
(4/5 grey scale)  
Tolerance: from 4 to 5  
to light UNI EN ISO 105-B02 6 (Blue scale)  
Tolerance: from 5 to 8

## Flame resistance

C1  
B1  
M1  
CRIB 5  
EN 1021/1-2  
IMO Res. A 652 (16) Part 8  
IMO Res. A 471 (XII) Part 7  
BS 7176 Medium Hazard  
NF D 60013 Class AM 18

## Care

Dry clean or clean with foam detergents.

Samples are purely indicative because of natural inconsistencies that occur in the raw materials. As a result there may be small differences in the product delivered.



## CAT A - Maya FIDIVI



9805



7020



9704



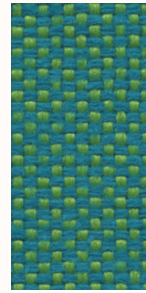
9703



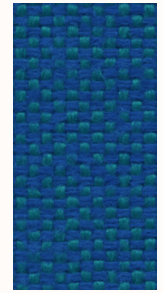
9702



7009



9705



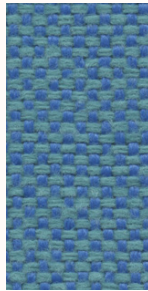
9602



6014



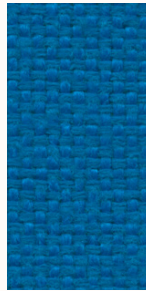
6091



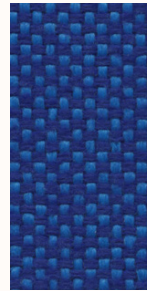
9601



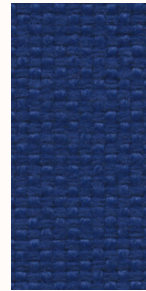
6006



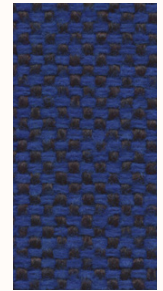
6075



9603



6080



9604



9501



9503



9502

# CAT A - Medley GABRIEL

## Design

Mette Krebs Petersen

## Application

Offices, hotels, institutions, domestic use.

## Description

Composition:  
100% Polyester

Width: 140 cm

Weight: app. 510 g/lin.m

## Tests

Abrasion  
App. 75.000 Martindale rubs  
EN ISO 12947-2

Pilling  
Note 4, EN ISO 12945-2

Light fastness  
Note 5-7, ISO 105-B02

Flame resistance  
BS EN 1021 1&2  
BS 5852 Part 1 0,1 Cigarette & match  
California Bulletin CAL 117-E-Class 1  
Class Uno UNI 9175 Class 1 I EMME  
CA TB 117-2013  
ÖNORM B 3825-B2-3800-Q1 UK

## Care

Dry clean or clean with foam detergents.

Samples are purely indicative because of natural inconsistencies that occur in the raw materials. As a result there may be small differences in the product delivered.



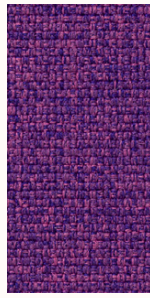
## CAT A - Medley GABRIEL



66145



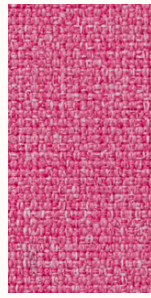
65086



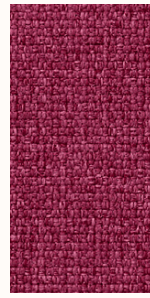
65012



65011



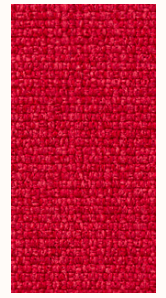
64124



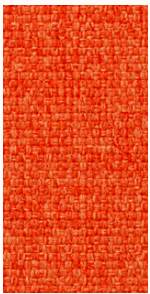
64125



64123



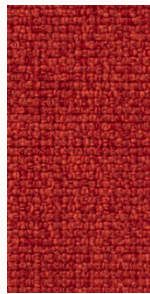
64019



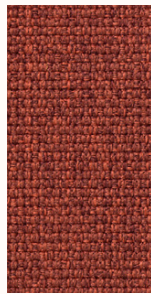
63013



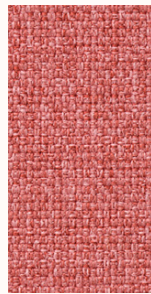
63017



63016



63063



63064



# CAT A - Grimm Fr MP

## Application

Contract and domestic use

## Description

Composition  
31% CO - 68% PVC- 1% PU

Weight g/m2 640

Width cm 140

## Tests

Abrasion  
resistance cicli / cycles EN ISO 5470-2  
150000

Colour fastness to light (Xenotest)  
UNI EN ISO 105-B02 7 colour change

Dry rubbing  
ISO 105 X-12 4/5

Wet rubbing  
ISO 105 X-12 4/5

Acid perspiration  
ISO 105 E-04 4/5

Alcaline perspiration  
ISO 105 E-04 4/5

Bending strenght cycles  
UNI 4818-13 150000

Tensile strenght  
ISO1421, Met.1 550 N warp, 300N weft

Tear strenght  
ISO 4674-1 40 N warp, 45N weft

Flame resistance  
EN 1021-1 EN 1021-2  
NF D 60-013  
UNI 9175 CL. 1IM  
BS 5852 crib 5

## Care

Clean with a damp cloth  
and mild soap.

Samples are purely indicative because of natural inconsistencies that occur in the raw materials. As a result there may be small differences in the product delivered.



# CAT B - Capture GABRIEL

## Application

Contract and domestic use.

## Description

Composition:

85% new Zealand wool, 15% polyamide

Width: 140 cm

Weight: app. 475 g/lin.m

## Tests

Abrasion  
App. 200.000 Martindale rubs  
EN ISO 12947

Pilling  
Note 4-5, EN ISO 12945

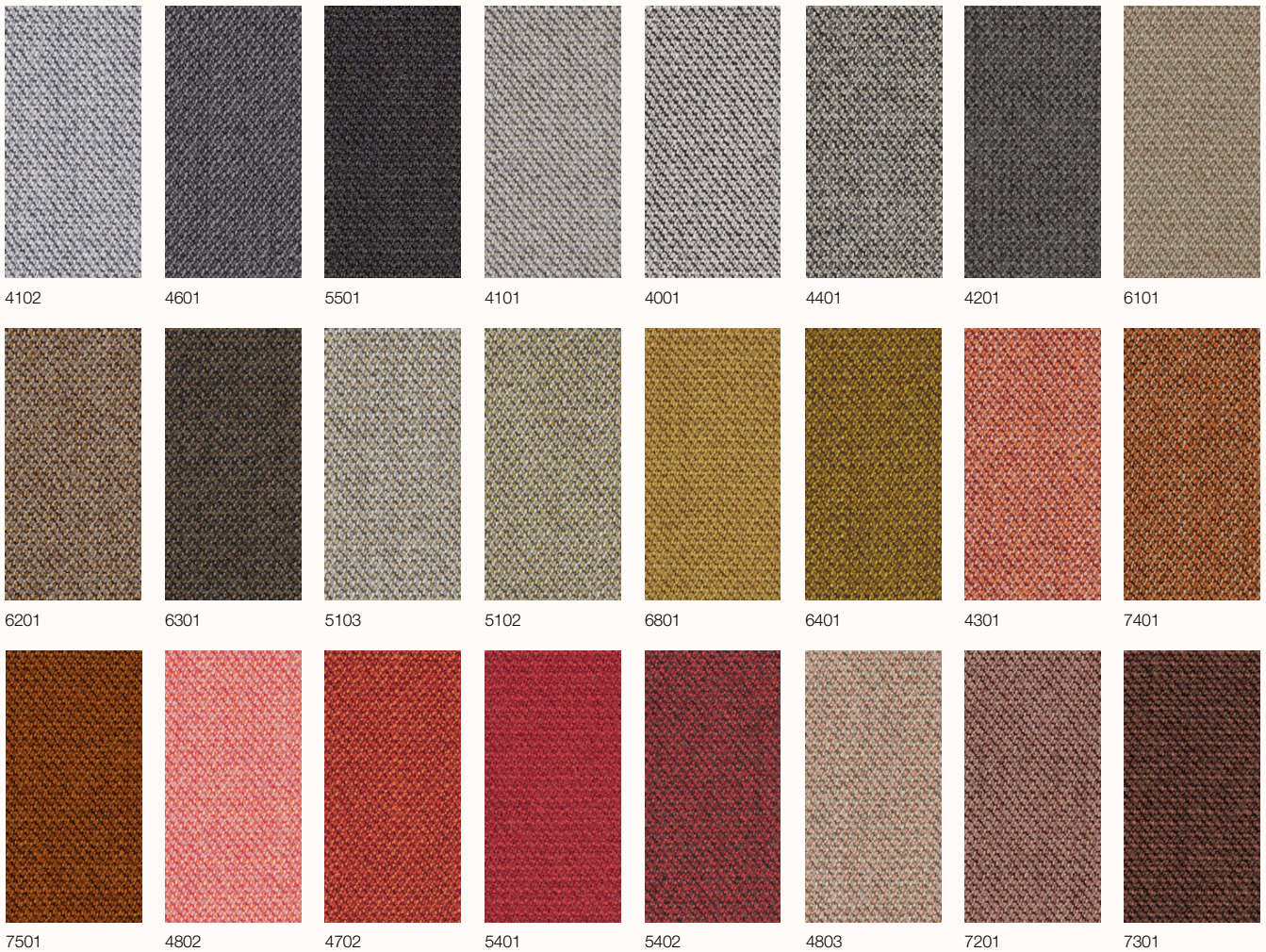
Light fastness  
Note 5-7, ISO 105-B02

Flame resistance  
EN 1021 1/2  
BS 5852 Part 1  
BS 5852, part 5 (with treatment)  
DIN 4102 B2  
UNI 9175/UNI 9176, 1 I-M  
US Cal. Tech. Bull. 117.2013

## Care

Dry clean or clean with foam detergents.

Samples are purely indicative because of natural inconsistencies that occur in the raw materials. As a result there may be small differences in the product delivered.



## CAT B - Capture GABRIEL

Cat B - Capture GABRIEL



6901



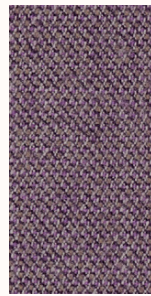
4801



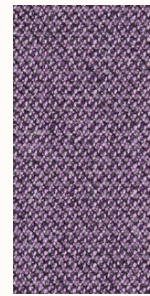
6701



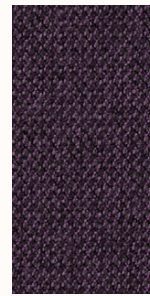
6302



6202



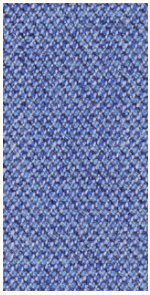
4501



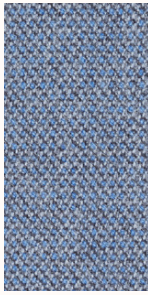
7001



5201



4901



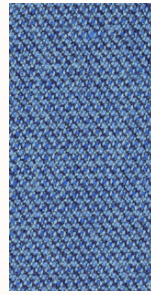
4902



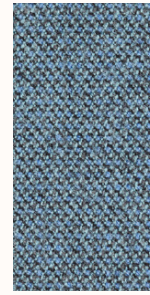
6602



6001



5002



5001



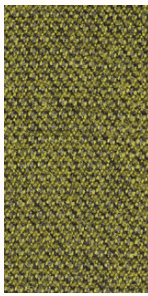
6601



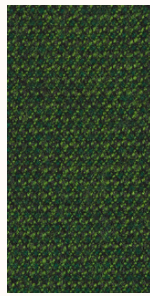
7101



5101



5301



6501

# CAT B - Crisp GABRIEL

## Application

Contract and domestic use.

## Description

Composition:

93% new Zealand wool, 7% polyamide

Width: 140 cm

Weight: app. 460 g/lin.m

## Tests

Abrasion  
App. 200.000 Martindale rubs  
EN ISO 12947-2

Pilling  
Note 4-5, EN ISO 12945-2

Light fastness  
Note 5-7, ISO 105-B02

Flame resistance  
EN 1021 1/2  
BS 5852 Part 1 0,1  
UNI 9175 1 I-M  
US Cal. Tech. Bull. 117.2013  
IMO MSC 307(88)

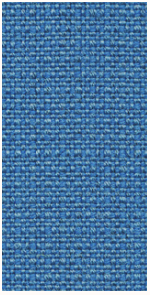
## Care

Dry clean or clean with foam detergents.

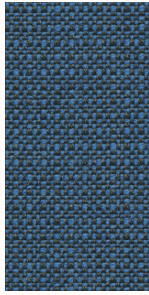
Samples are purely indicative because of natural inconsistencies that occur in the raw materials. As a result there may be small differences in the product delivered.



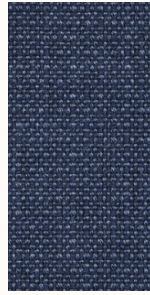
## CAT B - Crisp GABRIEL



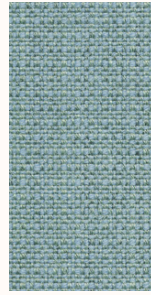
04601



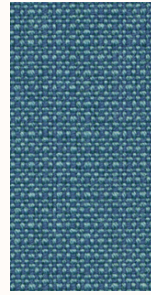
04122



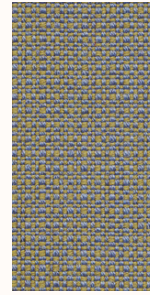
04741



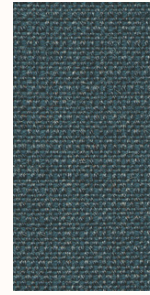
04751



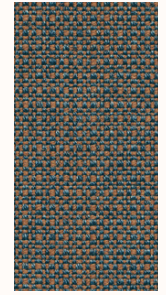
04602



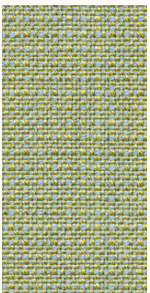
04603



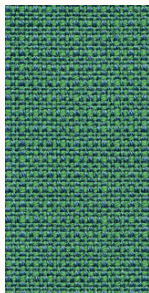
04723



04731



04201



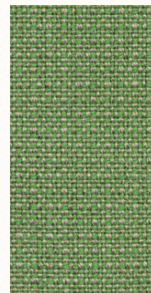
04605



04752



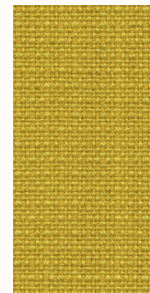
04761



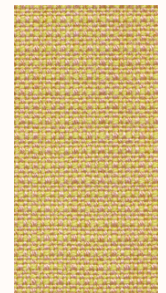
04117



04203



04211



04771



Suitable for outdoor

# CAT B - Nattè SUNBRELLA

### Application

Contract and domestic use.

### Description

Composition:  
100% Sunbrella® Acrylic

Width: 140 cm

Weight: app. 385 g/lin.m

### Tests

Water-Repellent  
Spray test ISO 4920 class 5  
Colour fastness  
UV indoor ISO105B02 class 8  
Weather outdoor ISO105B04 1000H  
Class 4-5  
Dry friction ISO105X12 Class 5

### Care

Dry clean or clean with foam  
detergents.

Samples are purely indicative because of natural inconsistencies that occur in the raw materials. As a result there may be small differences in the product delivered.





Suitable for outdoor

# CAT B - Iris RADA

### Application

Contract and domestic use.

### Description

Composition:  
100% PET RECYCLED  
(made with recycled plastic bottles)  
Width: 140 cm  
Weight: app. 800 g/lin.m

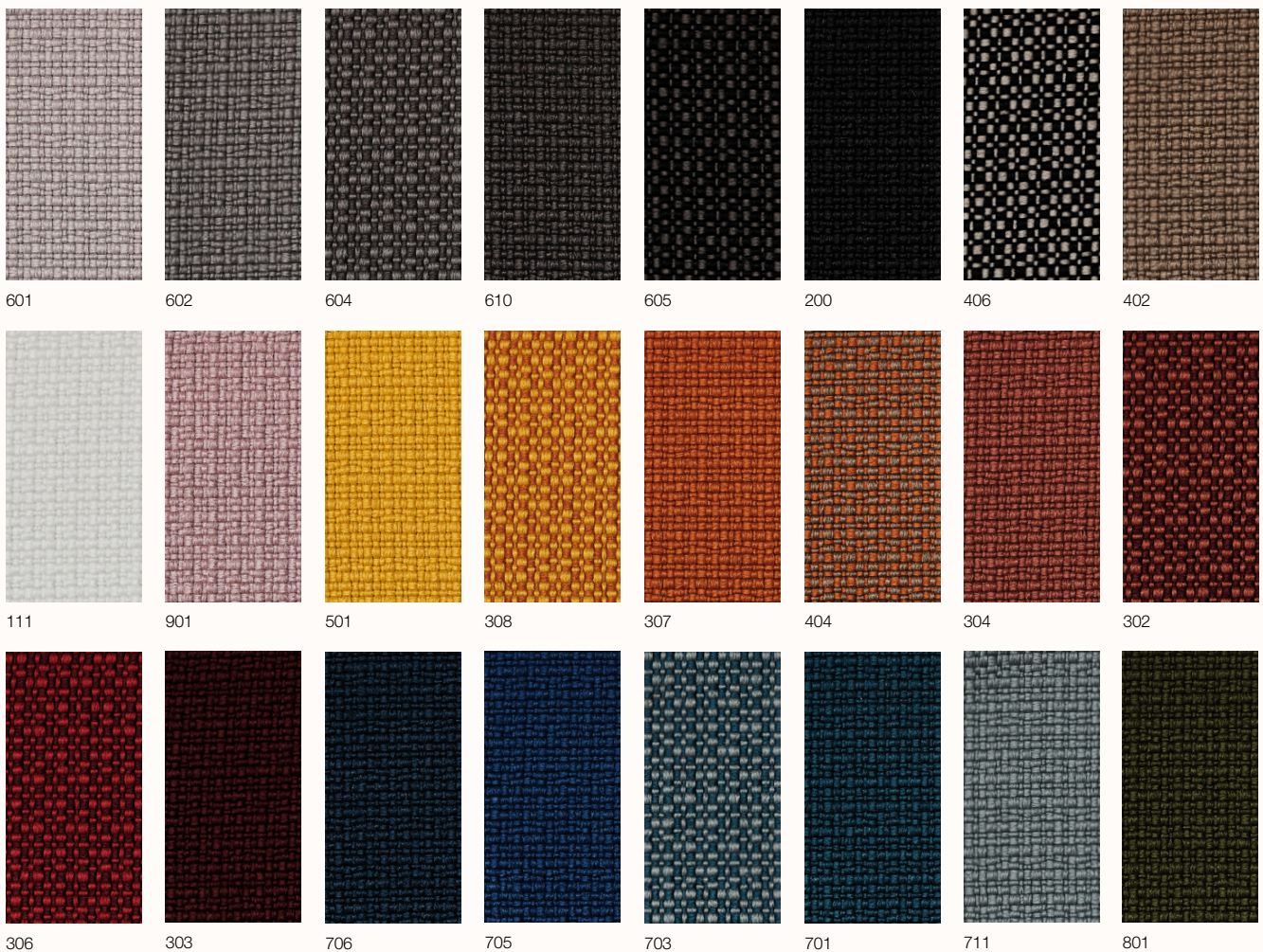
### Tests

Abrasion  
App. 100.000 Martindale rubs  
EN ISO 12947  
  
Pilling  
dry 4-5, EN ISO 12945  
wet 4, EN ISO 12945  
  
Light fastness 7, ISO 105-B02  
  
Flame resistance  
EN 1021-1/2  
BS 5852, flame  
BS 5852, cigarette test  
IMO FTP-8 Res.A652  
UNI 9175, class 1 I-M  
US Cal. Tech. Bull. 117.2013

### Care

Dry clean or clean with foam detergents.

Samples are purely indicative because of natural inconsistencies that occur in the raw materials. As a result there may be small differences in the product delivered.



# CAT B - Valencia SPRADLING

## Application

Contract and domestic use.

## Description

Composition:  
front PVC

back polyester cotton

Width: 137 cm

Weight: app. 890 g/lin.m

## Tests

Abrasion  
App. 300.000 Martindale rubs  
EN ISO 12947 part 2

UV Xenotest DIN54004 blue wool scale

Antibacterial Protection

Flame resistance  
EN 1021-part 1/2  
BS 5852, part 2  
BS 5852 crib 5  
FMVSS 302  
FAR 25/853

## Care

Dry clean or clean with foam  
detergents.

Samples are purely indicative because of natural inconsistencies that occur in the raw materials. As a result there may be small differences in the product delivered.





## CAT B - Valencia SPRADLING

							
107 7001 Amethyst	107 3068 Marine	107 2108 Night	107 3067 Delft	107 3001 Lavendel	107 3069 Baltic	107 5057 Türkis	107 2106 Coral
							
107 5056 Jade	107 2119 Teal	107 4043 Platin	107 5065 Petrol	107 4042 Titan	107 2107 Skylight	107 4040 Auster	107 4045 Perle
							
107 4044 Warm Grey	107 2116 Camel	107 2117 Cashmere	107 0035 Terracotta	107 2115 Chestnut	107 0033 Buche	107 9035 Schwarz	107 4003 Graphite
							
107 2109 Citrus	107 2110 Avocado	107 5041 Apfel	107 5001 Olive	107 5069 Grün	107 4052 Lichtgrau	107 4002 Laurel	107 4020 Silver
							
107 6020 Gold	107 1020 Ivory	107 8020 Pearlessence					

# CAT C - Canvas 2 KVADRAT

## Design

Giulio Ridolfo

## Application

Offices, hotels, institutions, domestic use.

## Description

Composition: 90% new wool, 10% nylon  
 Yarn type: Worsted  
 Binding: Semi-plain weave  
 Width: 140 cm  
 Weight: app. 480 g/lin.m

## Tests

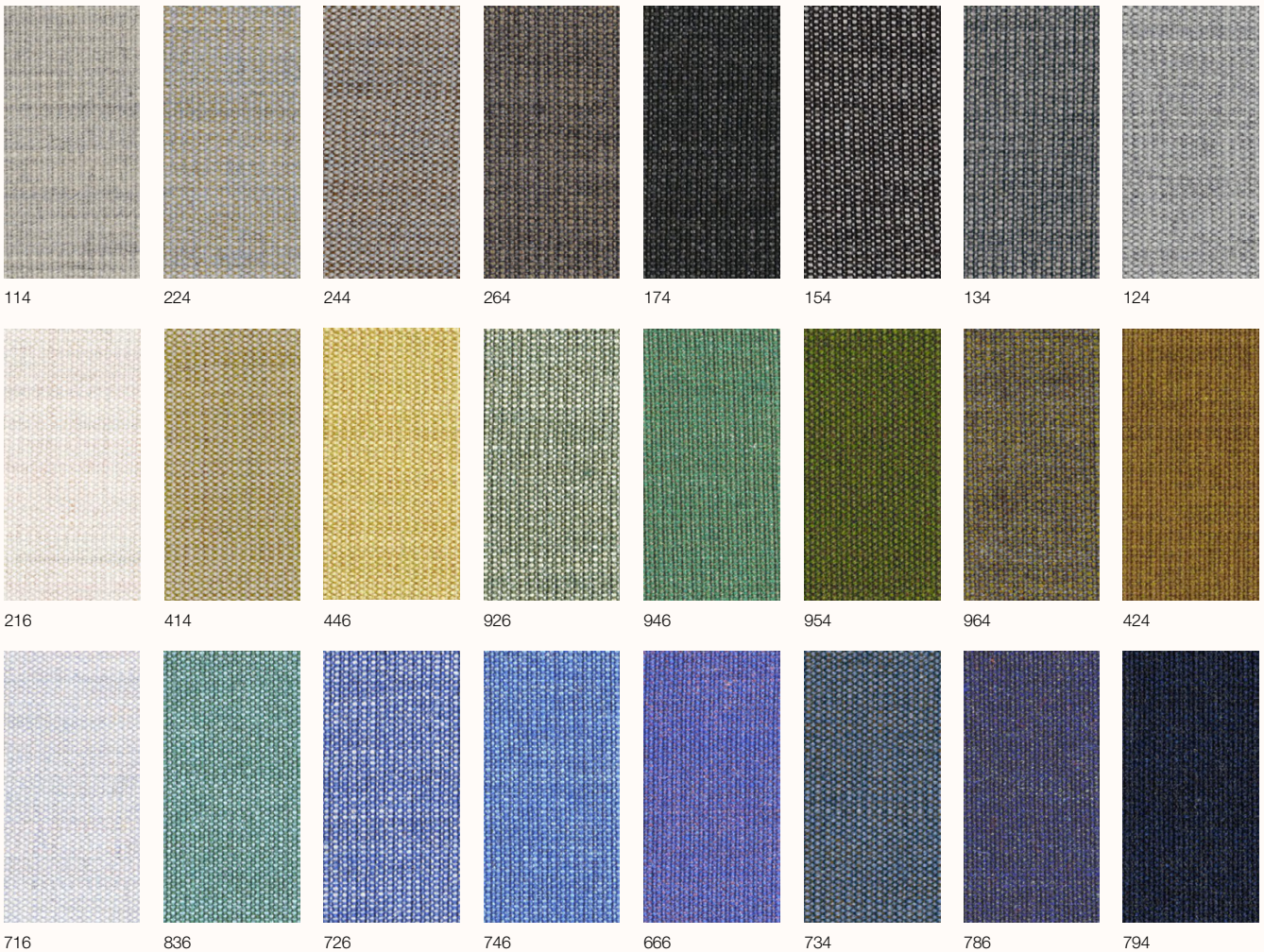
Abrasion  
 App. 100.000 Martindale rubs  
 EN ISO 12947  
 Pilling  
 Note 4-5, EN ISO 12945  
 Light fastness  
 Note 5-7, ISO 105-B02

Flame resistance  
 EN 1021-1/2  
 BS 5852 part 1  
 BS 5852, ignition source 2-3  
 DIN 4102 B2  
 Önorm B1/Q1  
 NF D 60 013  
 UNI 9175, 1IM  
 US Cal. Tech. Bull. 117  
 IMO A.652(16)

## Care

Dry clean or clean with foam detergents.

Samples are purely indicative because of natural inconsistencies that occur in the raw materials. As a result there may be small differences in the product delivered.



114 224 244 264 174 154 134 124  
 216 414 446 926 946 954 964 424  
 716 836 726 746 666 734 786 794

## CAT C - Canvas 2 KVADRAT



684



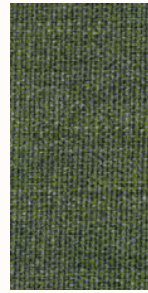
764



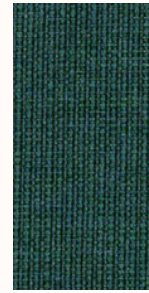
854



996



974



984



364



674



694



654



576



644



356



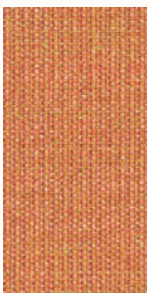
614



566



546



556



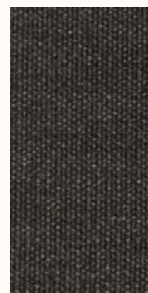
454



254



936



374

# CAT C - Clara 2 KVADRAT

## Design

Anne Birgitte Hansen

## Application

Offices, hotels, institutions, domestic use.

## Description

Composition: 92% new wool worsted, 8% nylon

Yarn type: Staple, worsted

Binding: Semi-plain weave

Width: 138 cm

Weight: app. 400 g/lin.m

## Tests

Abrasion  
App. 80.000 Martindale rubs,  
EN ISO 12947

Pilling  
Note 4, EN ISO 12945

Light fastness  
Note 5-7, ISO 105-B02

Flame resistance  
EN 1021-1/2  
BS 5852, ignition source 2-3  
DIN 4102 B2  
NF D 60 013  
UNI 9175 1IM  
US Cal. Tech. Bull. 117, Sec. E  
NFPA 260  
IMO A.652(16)

## Care

Vacuuming and dry cleaning.

Samples are purely indicative because of natural inconsistencies that occur in the raw materials. As a result there may be small differences in the product delivered.



384 388 277 273 248 244 188 184  
148 144 797 793 937 933 983 987  
888 884 548 544 647 643 427 423

# CAT C - Fiord 2 KVADRAT

## Design

Louise Sigvardt & Tone Barnung

## Application

Offices, hotels, institutions, domestic use.

## Description

Composition:  
92% new wool, 8% nylon  
Yarn type: Worsted  
Binding: Dobby  
Width: App. 140 cm (app. 55 inches)  
Weight: App. 500 g/lin.m

Samples are purely indicative because of natural inconsistencies that occur in the raw materials. As a result there may be small differences in the product delivered.

## Tests

Abrasion  
App. 60.000 Martindale rubs  
EN ISO 12947

Pilling  
Note 4-5, EN ISO 12945

Light fastness  
Note 5-7, ISO 105-B02

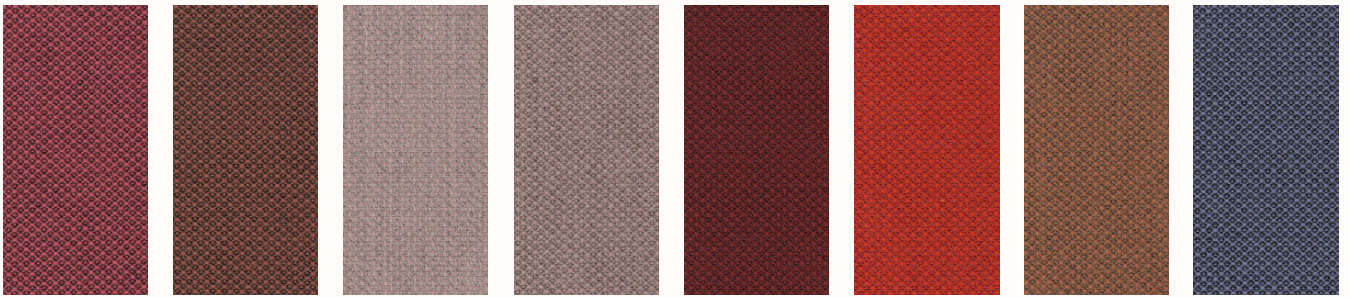
Flame resistance  
EN 1021-1/2  
BS 5852 part 1  
DIN 4102 B2  
NF D 60 013  
UNI 9175 1IM  
US Cal. Bull. 117-2013  
IMO FTP Code 2010:Part 8  
With flame retardant treatment:  
BS 5852 Crib 5

## Care

Vacuuming and dry cleaning



## CAT C - Fiord 2 KVADRAT



662

642

521

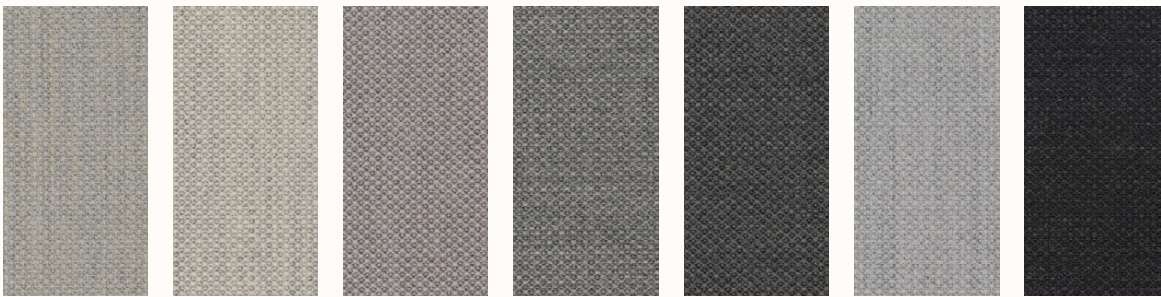
551

581

571

562

672



201

101

251

151

171

121

191

# CAT C - Hallingdal 65 KVADRAT

## Design

Nanna Ditzel

## Application

Offices, hotels, institutions, domestic use. Great durability

## Description

Composition: 70% new wool, 30% viscose

Yarn type: Stapel

Binding: Plain

Width: 130 cm

Weight: app. 795 g/lin.m

Samples are purely indicative because of natural inconsistencies that occur in the raw materials. As a result there may be small differences in the product delivered.

## Tests

Abrasion  
App. 100.000 Martindale rubs  
EN ISO 12947

Pilling  
Note 3, EN ISO 12945

Light fastness  
Note 5-7, ISO 105-B02

Flame resistance  
EN 1021-1/2  
BS 5852, ignition source 2-5  
DIN 4102 B2  
Onorm B1/Q1  
UNI 9175/UNI 9176, 1IM  
US Cal. Tech. Bull. 117  
IMO A.652(16)

## Care

Dry clean or clean with foam detergents.



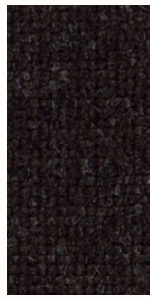
# CAT C - Hallingdal 65 KVADRAT



370



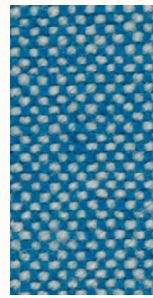
368



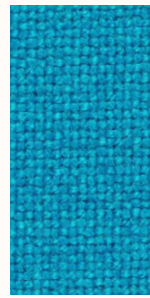
376



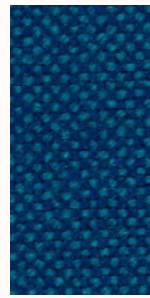
390



840



850



810



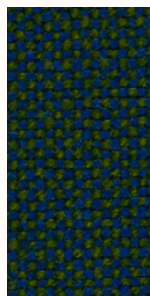
723



733



750



890



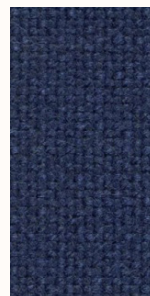
754



773



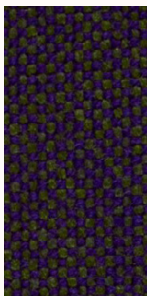
764



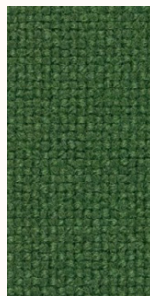
763



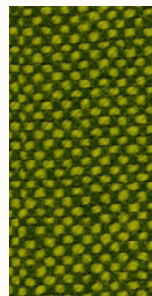
702



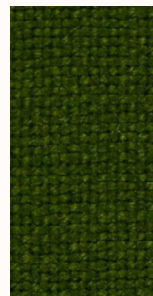
968



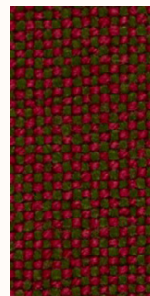
944



980



960



660



563



573



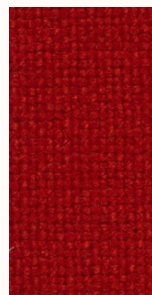
694



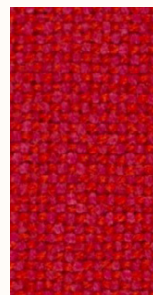
687



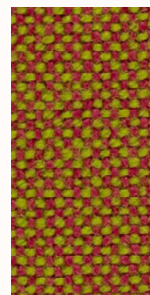
657



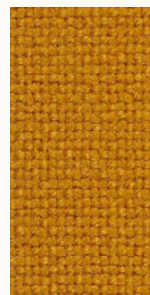
674



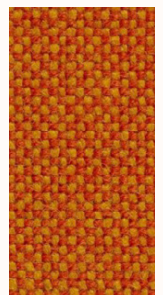
680



526



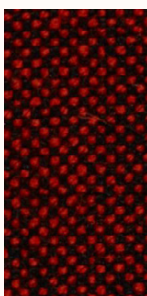
547



590



600



596



# CAT C - Remix 3 KVADRAT

## Design

Giulio Ridolfo

## Application

Offices, hotels,  
institutions, domestic use.  
Great durability

## Description

Composition:  
90% new wool, 10% nylon  
Yarn type: Stapel, worsted  
Binding: Plain weave  
Width: 135 cm  
Weight: app. 460 g/lin.m

**Samples are purely indicative because of natural inconsistencies that occur in the raw materials. As a result there may be small differences in the product delivered.**

## Tests

Abrasion  
App. 100.000 Martindale rubs,  
EN ISO 12947

Pilling  
Note 3-4, EN ISO 12945

Light fastness  
Note 5-7, ISO 105-B02

Flame resistance  
EN 1021-1/2  
BS 5852, ignition source 2-3  
Onorm B1/Q1  
UNI 9175, 1IM  
Cal. Tech. Bull. 117, Sec. E  
IMO A.652(16)

## Care

Dry clean or clean with foam  
detergents.



0575/13



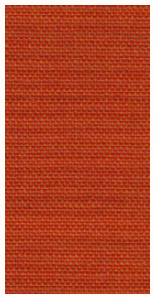
Flame Resistant



06/18/24



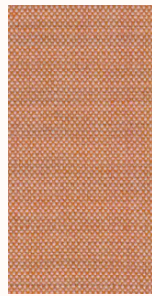
## CAT C - Remix 3 KVADRAT



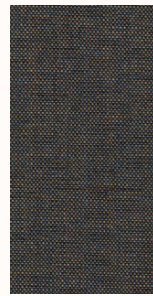
543



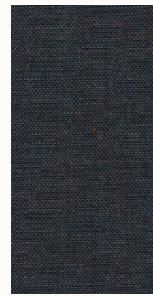
536



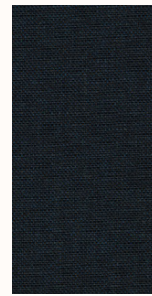
516



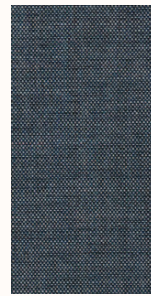
852



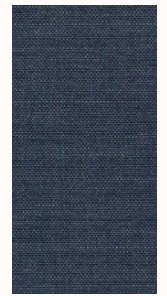
753



873



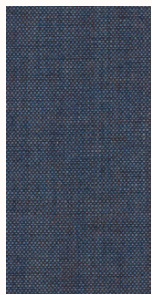
716



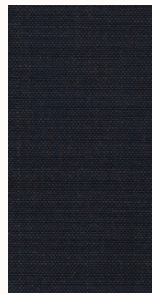
836



733



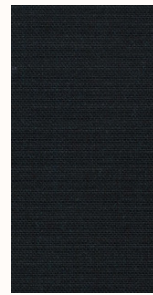
743



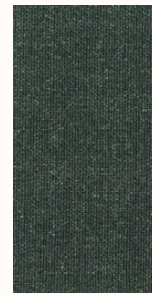
796



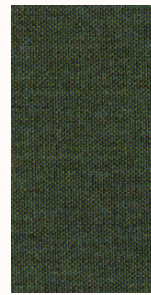
906



996



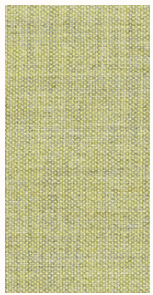
973



982



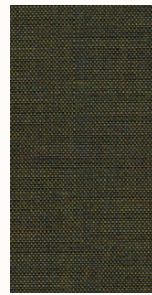
933



923



912



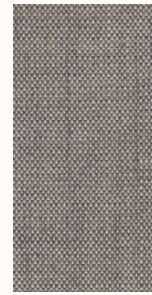
842



962



954



126



136



133



113



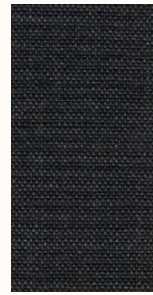
123



143



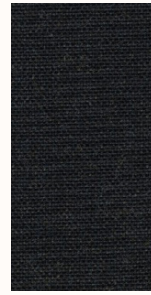
152



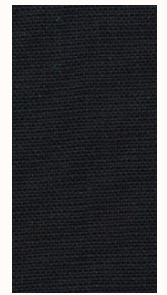
173



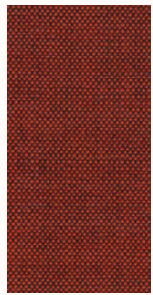
163



183



196



566



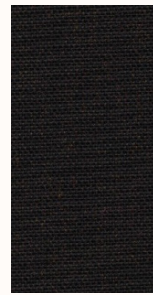
643



632



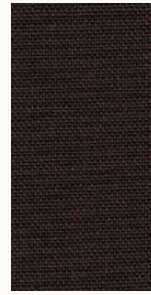
653



383



662

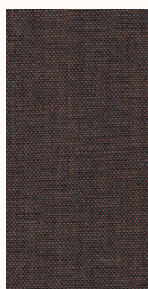


373



362

## CAT C - Remix 3 KVADRAT



672



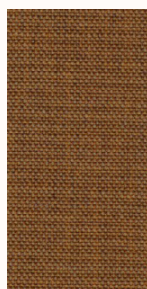
612



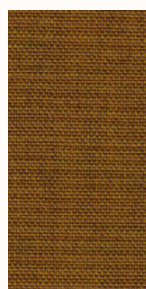
406



252



433



422



412



942

# CAT C - Tonica 2 KVADRAT

## Design

Georgina Wright

## Application

Offices, hotels, institutions, domestic use.

## Description

Composition: 100% new wool

Yarn type: Stapel

Binding: Plain

Width: 140 cm

Weight: app. 700 g/lin.m

## Tests

Abrasion  
App. 45.000 Martindale rubs,  
EN ISO 12947

Pilling  
Note 4-5, EN ISO 12945

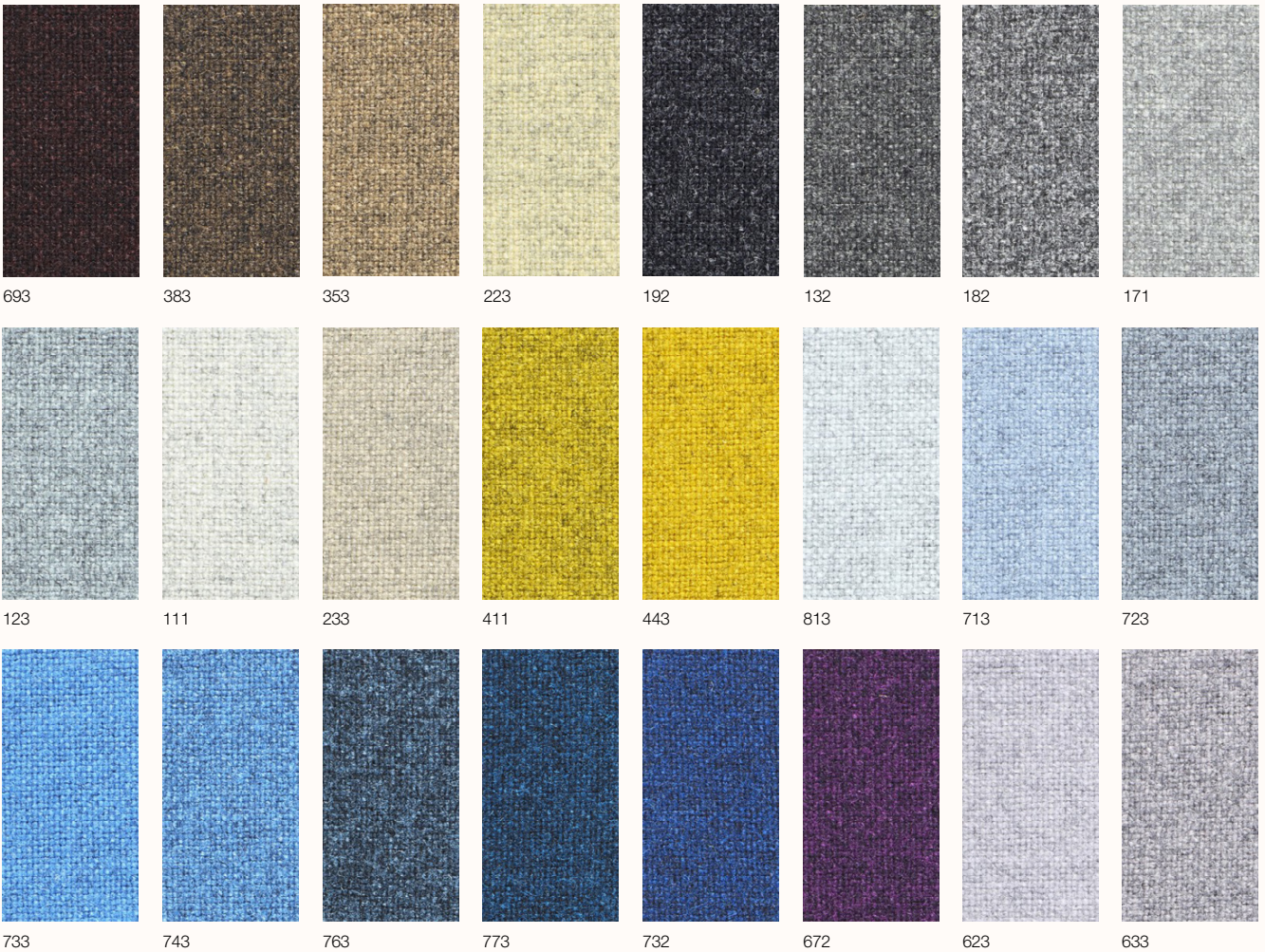
Light fastness  
Note 5-7, ISO 105-B02

Flame resistance  
EN 1021-1/2  
BS 5852, ignition source 2-4  
DIN 4102 B2  
Önorm B1/Q1  
UNI 9175/UNI 9176, 1IM  
Cal. Tech. Bull. 117, Sec. E  
IMO A.652(16)

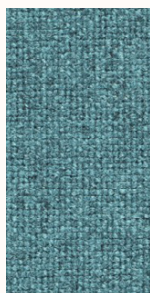
## Care

Vacuuming and dry cleaning

Samples are purely indicative because of natural inconsistencies that occur in the raw materials. As a result there may be small differences in the product delivered.



## CAT C - Tonica 2 KVADRAT



831



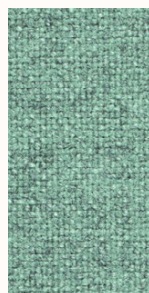
832



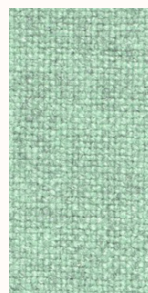
873



962



933



923



613



523



533



511



543



531



611



643



612



Suitable for outdoor

# CAT C - Lapalma Smart

### Application

Contract and domestic use

### Description

Composition:  
100% SOLUTION DYED ACRILIC

Width: 140cm

Weight Gr./mtl.: 700

### Tests

Shirinkage after dry cleaning  
Warp: -1 % Weft: -1 %

Shirinkage after washing  
Warp: -3 % Weft: -3 %

Resistance to PILLING  
after 2000 cycles  
Note 4 EN ISO 12945-2

Abrasion  
20000 Cicli EN ISO 12947-2

Light fastness  
Note 7/8 EN ISO105B02

Color fastness to washing  
Note 5 EN ISO105C06

Color fastness to dry Cleaning  
Note 5 EN ISO105D01

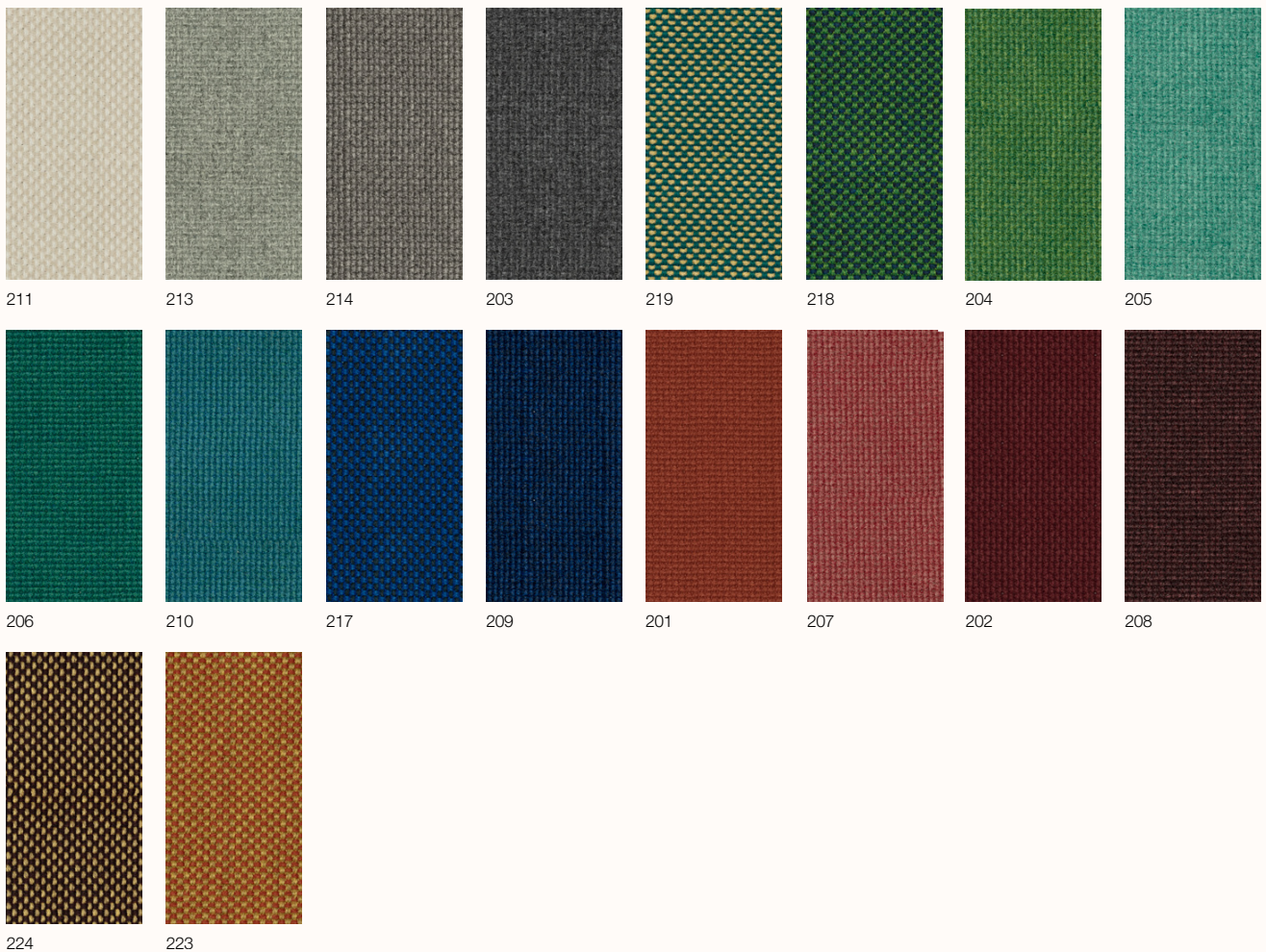
Color fastness  
to crocking Test WET  
Note 4/5 EN ISO105X12

Color fastness  
to crocking Test DRY  
Note 5 EN ISO105X12

### Care

Cleaning: Vacuuming  
Mount in moist condition.  
Mildew growth is not promoted  
by the textile but mildew may  
grow on dirt and other foreign  
substances if not removed.  
Keep the textile dry to avoid  
mildew spores to stick.

Samples are purely indicative because of natural inconsistencies that occur in the raw materials. As a result there may be small differences in the product delivered.



# CAT D - Divina MD KVADRAT

## Design

Finn Skodt

## Application

Offices, hotels, institutions, domestic use.

## Description

Composition:

100% new wool

Yarn type: Stapel

Binding: 4-end broken twill

Width: 150 cm

Weight: app. 820 g/lin.m

## Tests

Abrasion

App. 45.000 Martindale rubs, EN ISO 12947

Pilling

Note 3, EN ISO 12945

Light fastness

Note 5-7, ISO 105-B02

Flame resistance

EN 1021-1/2

BS 5852, ignition source 2-5

DIN 4102 B2

Onorm B1/Q1

NF D 60 013

UNI 9175 1IM

US Cal. Tech. Bull. 117

AS.NZS 1530.3

IMO A.652(16)

## Care

Dry clean or clean with foam detergents.

Samples are purely indicative because of natural inconsistencies that occur in the raw materials. As a result there may be small differences in the product delivered.



## CAT D - Divina MD KVADRAT



633



613



433



# CAT D - Divina Melange 3 KVADRAT

## Design

Finn Sködt

## Application

Offices, hotels, institutions, domestic use.

## Description

Composition:

100% New wool

Yarn type: Stapel

Binding: 4-end broken twill

Width: 150 cm

Weight: app. 820 g/lin.m

## Tests

Abrasion

App. 45.000 Martindale rubs

EN ISO 12947

Pilling

Note 3, EN ISO 12945

Light fastness

Note 7, ISO 105-B02

Flame resistance

EN 1021-1/2

BS 5852, ignition source 2-5 DIN 4102 B2

Önorm B1/Q1

UNI 9175/UNI 9176, 1IM

US Cal. Tech. Bull. 117

IMO A.652(16)

## Care

Dry clean or clean with foam detergents.

Samples are purely indicative because of natural inconsistencies that occur in the raw materials. As a result there may be small differences in the product delivered.



0575/13



Flame Resistant



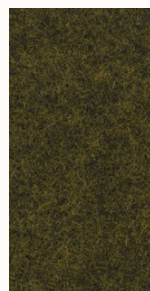
WOOL OF NEW ZEALAND



427



457



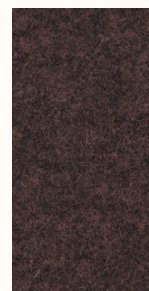
471



467



617



677



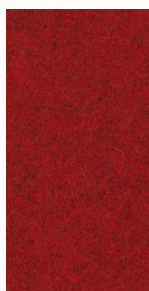
581



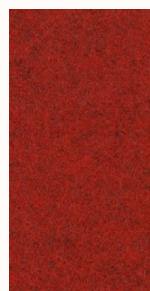
620



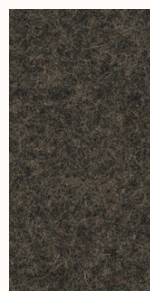
597



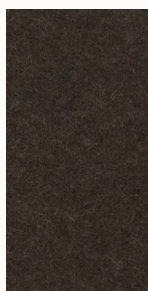
567



557



277



280



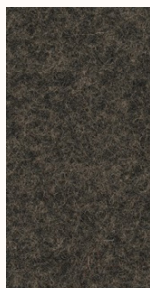
260



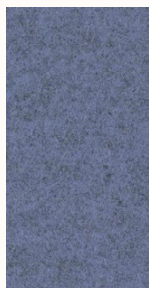
367



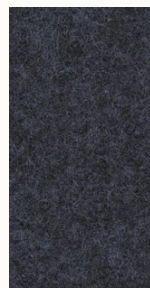
237



227



647



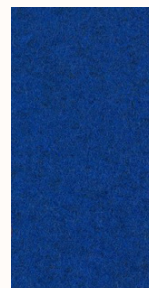
687



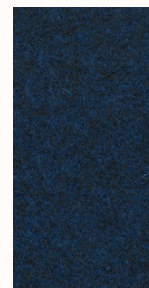
787



747



757



777



731

## CAT D - Divina Melange 3 KVADRAT



547



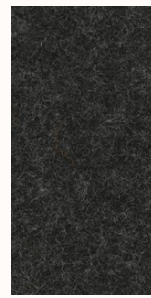
527



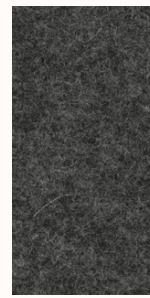
517



571



180



170



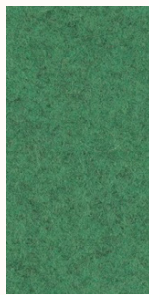
147



120



917



937



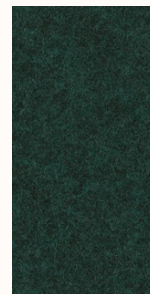
977



967



821



871

# CAT D - Steelcut 3 KVADRAT

## Design

Frans Dijkmeijer  
Giulio Ridolfo

## Application

Offices, hotels,  
institutions, domestic use.  
Great durability

## Description

Composition:  
90% new wool, 10% nylon  
Yarn type: Stapel, worsted  
Binding: Semi-plain

Width: 140 cm

Weight: app. 825 g/lin.m

## Tests

Abrasion  
App. 100.000 Martindale rubs,  
EN ISO 12947

Pilling  
Note 3-4, EN ISO 12945

Light fastness  
Note 5-6, ISO 105-B02

## Flame resistance

AS/NZS 1530.3  
AS/NZS 3837 class 2  
ASTM E84 Class A Unadhered  
ASTM E84 Class B Adhered  
BS 5852 crib 5 with treatment \*  
BS 5852 part 1  
EN 1021-1/2  
IMO FTP Code 2010 Part 8  
NF D 60 013  
NFPA 260  
ÖNORM B2/Q1  
SN 198 898 5.3 with treatment \*  
UNI 9175 1IM  
US Cal. Bull. 117-2013

## Care

Vacuuming and dry cleaning.

Samples are purely indicative because of natural inconsistencies that occur in the raw materials. As a result there may be small differences in the product delivered.



110 120 140 155 160 180 190 220  
240 252 265 365 402 445 452 502  
512 522 535 545 552 562 605 612

## CAT D - Steelcut 3 KVADRAT



652



655



662



672



682



695



732



742



775



780



820



912



922



932



962



975



985

# CAT D - Steelcut Trio 3 KVADRAT

## Design

Frans Dijkmeijer  
Giulio Ridolfo

## Application

Offices, hotels,  
institutions, domestic use.  
Great durability

## Description

Composition:  
90% new wool, 10% nylon  
Yarn type: Stapel, worsted  
Binding: Semi-plain

Width: 140 cm  
Weight: app. 770 g/lin.m

## Tests

Abrasion  
App. 100.000 Martindale rubs,  
EN ISO 12947

Pilling  
Note 3-4, EN ISO 12945

Light fastness  
Note 5-7, ISO 105-B02

Flame resistance  
EN 1021-1/2  
BS 5852, ignition source 2  
DIN 4102 B2  
Onorm B1/Q1  
Italian Class 1IM  
US Cal. Tech. Bull. 117  
IMO A.652(16)

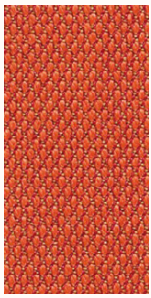
## Care

Vacuuming and dry cleaning.

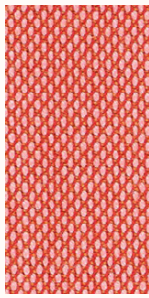
Samples are purely indicative because of natural inconsistencies that occur in the raw materials. As a result there may be small differences in the product delivered.



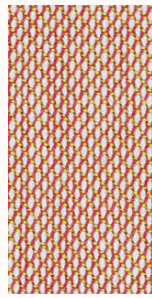
## CAT D - Steelcut Trio 3 KVADRAT



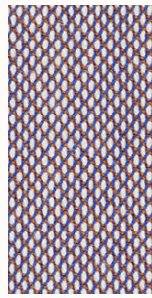
533



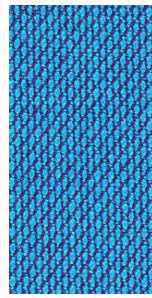
526



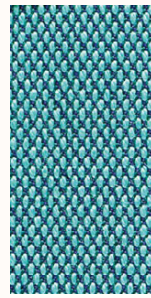
515



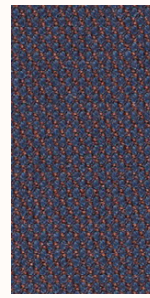
806



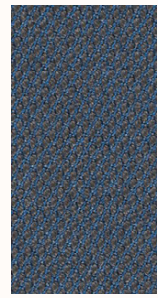
865



983



776



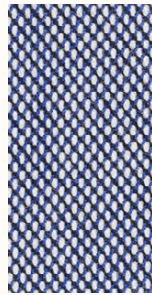
756



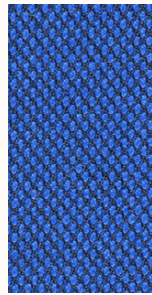
883



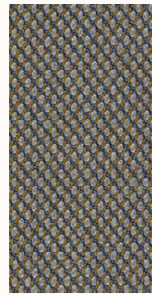
796



716



746



266



253



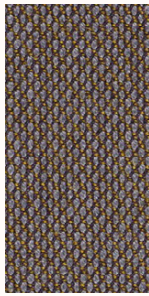
205



246



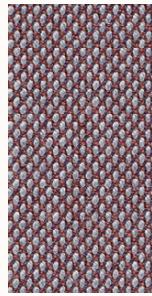
283



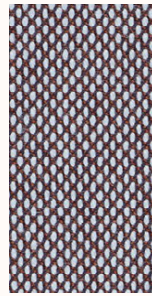
376



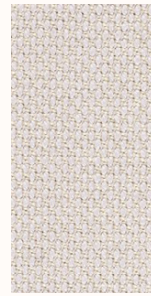
383



276



336



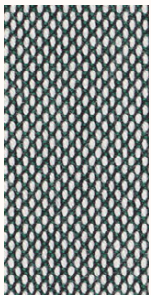
226



213



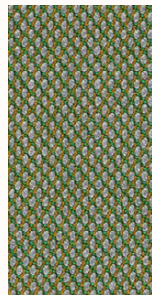
996



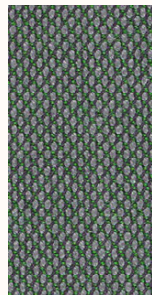
916



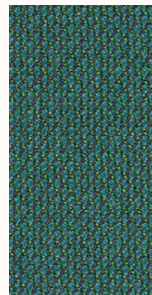
906



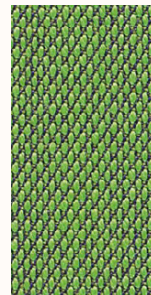
946



966



976



953

# CAT E - Uniform Melange KVADRAT

## Design

Feabrik

## Application

Contract and domestic use.

## Description

Composition:  
68% new wool, 22% viscose  
10% polyester 2mm foam  
Width: 165 cm  
Weight: app. 870 g/lin.m

## Tests

Abrasion  
App. 100.000 Martindale rubs,  
EN ISO 12947

Pilling  
Note 4, EN ISO 12945

Light fastness  
6, ISO 105-B02

Flame resistance  
EN 1021-1/2  
BS 5852,part 1  
DIN 4102 B2  
Onorm B1/Q1  
UNI 9175/UNI 9176, 1IM  
US Cal. Tech. Bull. 117.2013  
IMO FTP code 2010:part 8

## Care

Dry clean or clean with foam  
detergents.

Samples are purely indicative because of natural inconsistencies that occur in the raw materials. As a result there may be small differences in the product delivered.



# CAT E - Uniform Melange KVADRAT



813



963



833



883



983



993



453



933



913



123



133



163



183



193



# Pelle Soft-Leather

## Application

Contract and domestic use.

## Description

Thickness 0,9/1,0 mm  
 European raw hides  
 Chrome tannage  
 Through-dyeing Aniline  
 Finishing pigmented

## Tests

This item complies with the 3M test for oleo and hydro repellency. The Scotchgard treatment gives more protection and durability to leather.

Dry rub fastness  
 UNI EN ISO 11640 > 3 Grey Scale

Light fastness  
 UNI EN ISO 105-B02 > 3 Blue Scale

Tear resistance  
 UNI EN ISO 3377-1 > 20 N

Flame resistance  
 BS EN 1021-2:2006  
 No Ignition  
 BS EN 1021-1:2006  
 No Ignition

## Care

Dust with a soft and dry cloth for the normal cleaning. Stains can be treated with a wet cloth or cotton wool and with products for the cleaning initially more delicate like neutral soap or cleansing milk. Dry immediately after treatment. Never use abrasive or aggressive products like solvents, stain removers. Never steam it. Don't use shoe cleaning products. When a new product is used for cleaning, apply it in a "hidden" area to test its effectiveness and to avoid damages where more visible. Avoid placing leather near direct sun. Keep the leather away from heat sources. Dust regularly with a soft and dry cloth.

Samples are purely indicative because of natural inconsistencies that occur in the raw materials. As a result there may be small differences in the product delivered.



P3 Fango chiaro

P10 Grigio

P7 Fango scuro

P4 Bianco

P9 Marrone scuro

P1 Nero

P2 Rosso

# Cuoio Leather

## Application

Contract and domestic use.

## Description

Thickness 2.4 - 2.5 mm

Cow hides

Vegetable tannage

Finishing Pigmented

## Tests

Dry rub fastness  
UNI EN ISO 11640  
1000 cycles 5 Grey Scale

Wet rub fastness  
UNI EN ISO 11640  
250 cycles 5 Grey Scale

Light fastness  
UNI EN ISO 105-B01  
72h 4-5 Grey Scale

Adhesion of finishing  
UNI EN ISO 11644 >15 N/10mm

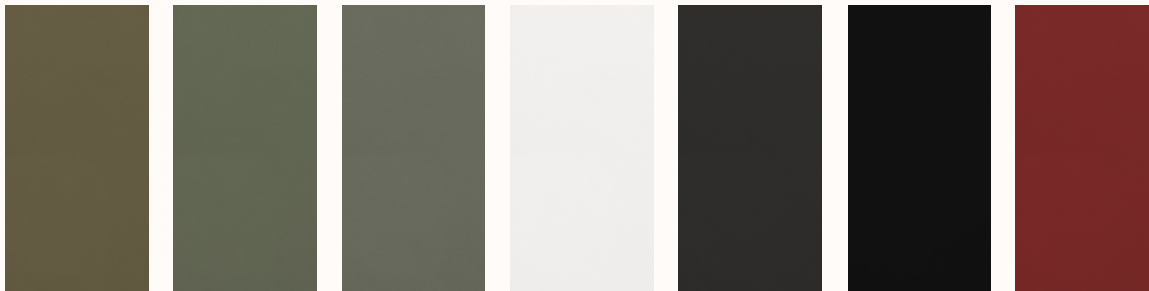
Flex resistance  
UNI EN ISO 5402  
20000 cycles no damages

Taber abrasion  
500 cycles CS10  
load 500 gr. 4-5 grey scale

## Care

Dust with a soft and dry cloth for the normal cleaning. Stains can be treated with a wet cloth or cotton wool and with products for the cleaning initially more delicate like neutral soap or cleansing milk. Dry immediately after treatment. Never use abrasive or aggressive products like solvents, stain removers. Never steam it. Don't use shoe cleaning products. When a new product is used for cleaning, apply it in a "hidden" area to test its effectiveness and to avoid damages where more visible. Avoid placing leather near direct sun. Keep the leather away from heat sources. Dust regularly with a soft and dry cloth.

**Samples are purely indicative because of natural inconsistencies that occur in the raw materials. As a result there may be small differences in the product delivered.**



C3  
Fango chiaro

C10  
Grigio

C7  
Fango scuro

C4  
Bianco

C9  
Marrone scuro

C1  
Nero

C2  
Rosso